

Recombinant Human MGST2 Protein, GST-tagged

Cat. No. MGST2-5310H **Lot. No.** (See product label)

SPECIFICATION

Product Overview	Human MGST2 full-length ORF (AAH25416, 1 a.a. - 147 a.a.) recombinant protein with GST-tag at N-terminal.
Species	Human
Source	Wheat Germ
Description	The MAPEG (Membrane Associated Proteins in Eicosanoid and Glutathione metabolism) family consists of six human proteins, several of which are involved in the production of leukotrienes and prostaglandin E, important mediators of inflammation. This gene encodes a protein which catalyzes the conjugation of leukotriene A4 and reduced glutathione to produce leukotriene C4. [provided by RefSeq]
Molecular Mass	41.91 kDa
AA Sequence	MAGNSILLA AVSILSACQSYFALQVGKARLKYKVTTPPAVTGSPEFERVFRAQQNCV EFYPIFIITLWMAGWYFNQVFATCLGLVYIYGRHLYFWGYSEAAKKRITGFRLSLGILA LLTLLGALGIANSFLDEYLDLNI AKKLRRQF
Applications	Enzyme-linked Immunoabsorbent Assay Western Blot (Recombinant protein) Antibody Production Protein Array

 Tel: 1-631-559-9269 1-516-512-3133

 Email: info@creative-biomart.com  Fax: 1-631-938-8127

 45-1 Ramsey Road, Shirley, NY 11967, USA

Notes	Best use within three months from the date of receipt of this protein.
Storage	Store at -80 centigrade. Aliquot to avoid repeated freezing and thawing.
Storage Buffer	50 mM Tris-HCl, 10 mM reduced Glutathione, pH=8.0 in the elution buffer.

GENE INFORMATION

Gene Name	MGST2 microsomal glutathione S-transferase 2 [Homo sapiens]
Official Symbol	MGST2
Synonyms	MGST2; microsomal glutathione S-transferase 2; MGST II; microsomal GST-2; microsomal GST-II; GST2; MGST-II; FLJ27438; MGC14097;
Gene ID	4258
mRNA Refseq	NM_001204366
Protein Refseq	NP_001191295
MIM	601733
UniProt ID	Q99735

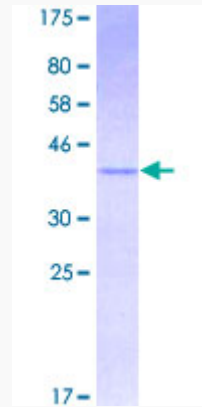
 Tel: 1-631-559-9269 1-516-512-3133

 Email: info@creative-biomart.com  Fax: 1-631-938-8127

 45-1 Ramsey Road, Shirley, NY 11967, USA

Quality Control

Testing:



12.5% SDS-PAGE Stained with Coomassie Blue.

 Tel: 1-631-559-9269 1-516-512-3133

 Email: info@creative-biomart.com  Fax: 1-631-938-8127

 45-1 Ramsey Road, Shirley, NY 11967, USA