

Recombinant Human MIB2 Protein, GST-tagged

Cat. No. MIB2-5317H Lot. No. (See product label)

SPECIFICATION

Product Overview	Human MIB2 partial ORF (AAH37542, 381 a.a. - 480 a.a.) recombinant protein with GST-tag at N-terminal.
Species	Human
Source	Wheat Germ
Description	The protein encoded by this gene is an E3 ubiquitin protein ligase that mediates ubiquitination of proteins in the Notch signaling pathway. The encoded protein may be a suppressor of melanoma invasion. [provided by RefSeq, Mar 2017]
Molecular Mass	36.74 kDa
AA Sequence	IGDLDTVKRLQAGHGEWTDDMAPALGRVGVVVKVFGDGNLRVAVAGQRWTFSPS CLVAYRPEEDANLDVAERARENKSSLSVALDKLRAQKSDPEHPGRL
Applications	Enzyme-linked Immunoabsorbent Assay Western Blot (Recombinant protein) Antibody Production Protein Array
Notes	Best use within three months from the date of receipt of this protein.
Storage	Store at -80 centigrade. Aliquot to avoid repeated freezing and thawing.

 Tel: 1-631-559-9269 1-516-512-3133

 Email: info@creative-biomart.com  Fax: 1-631-938-8127

 45-1 Ramsey Road, Shirley, NY 11967, USA

Storage Buffer 50 mM Tris-HCl, 10 mM reduced Glutathione, pH=8.0 in the elution buffer.

GENE INFORMATION

Gene Name MIB2 mindbomb E3 ubiquitin protein ligase 2 [Homo sapiens]

Official Symbol MIB2

Synonyms

MIB2; mindbomb E3 ubiquitin protein ligase 2; mindbomb homolog 2 (Drosophila) , zinc finger, ZZ type with ankyrin repeat domain 1 , ZZANK1; E3 ubiquitin-protein ligase MIB2; FLJ39787; skeletrophin; ZZZ5; novelzin; mindbomb homolog 2; mind bomb homolog 2; novel zinc finger protein; putative NF-kappa-B-activating protein 002N; zinc finger, ZZ type with ankyrin repeat domain 1; zinc finger ZZ type with ankyrin repeat domain protein 1; ZZANK1; FLJ20648; FLJ41406;

Gene ID 142678

mRNA Refseq NM_001170686

Protein Refseq NP_001164157

MIM 611141

UniProt ID Q96AX9

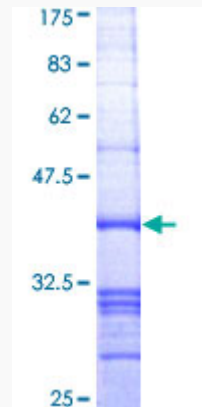
 Tel: 1-631-559-9269 1-516-512-3133

 Email: info@creative-biomart.com  Fax: 1-631-938-8127

 45-1 Ramsey Road, Shirley, NY 11967, USA

Quality Control

Testing:



12.5% SDS-PAGE Stained with Coomassie Blue.

 Tel: 1-631-559-9269 1-516-512-3133

 Email: info@creative-biomart.com  Fax: 1-631-938-8127

 45-1 Ramsey Road, Shirley, NY 11967, USA