

## Active Recombinant Human MICA protein, His-GST-tagged

Cat. No. MICA-1778H Lot. No. (See product label)

### SPECIFICATION

<b>Product Overview</b>	Active Recombinant Human MICA protein(Q29983)(24-307 aa), fused with N-terminal His tag and GST tag, was expressed in E.coli.
<b>Species</b>	Human
<b>Source</b>	E.coli
<b>ProteinLength</b>	24-307 aa
<b>Form</b>	20mM Tris, 150mM NaCl, pH8.0, containing 1mM EDTA, 1mM DTT, 0.01% SKL, 5% Trehalose and Proclin300.
<b>Bio-activity</b>	MHC Class I Polypeptide Related Sequence A (MICA) is a stress-induced cell surface protein. It belongs to the MHC class I-like molecules but has distinct features. MICA is highly expressed on cells under stress, such as those with DNA damage or infected cells. Structurally, it has a domain structure that allows for interactions with other molecules. MICA can function as a ligand and binds to Killer Cell Lectin Like Receptor Subfamily D, Member 1 (KLRD1, also known as NKG2D) on the surface of natural killer (NK) cells and some T cells. This binding activates immune cells and enables them to participate in the body's immune surveillance and defense responses. Thus a functional ELISA assay was conducted to detect the interaction of recombinant human MICA and recombinant human KLRD1. Briefly, MICA was diluted serially in PBS with 0.01% BSA (pH 7.4). Duplicate samples of 100 µl were then transferred to KLRD1-coated microtiter wells and incubated for 1h at 37°C. Wells were washed with

 Tel: 1-631-559-9269 1-516-512-3133

 Email: [info@creative-biomart.com](mailto:info@creative-biomart.com)  Fax: 1-631-938-8127

 45-1 Ramsey Road, Shirley, NY 11967, USA

PBST and incubated for 1h with anti-MICA pAb, then aspirated and washed 3 times. After incubation with HRP labelled secondary antibody for 1h at 37°C, wells were aspirated and washed 5 times. With the addition of substrate solution, wells were incubated 15-25 minutes at 37°C. Finally, add 50 µ stop solution to the wells and read at 450/630nm immediately. The binding activity of recombinant human MICA and recombinant human KLRD1 was shown, the EC50 for this effect is 0.582ug/mL.

<b>Molecular Mass</b>	62.7kDa
<b>Endotoxin</b>	<1.0EU per 1µg (determined by the LAL method).
<b>Purity</b>	> 90%
<b>Storage</b>	Avoid repeated freeze/thaw cycles. Store at 2-8°C for one month. Store at -20°C for 12 months. Aliquot and store at -80°C for 12 months.
<b>Reconstitution</b>	Reconstitute in 10mM PBS (pH7.4) to a concentration of 0.1-1.0 mg/mL. Do not vortex.

## GENE INFORMATION

<b>Gene Name</b>	MICA MHC class I polypeptide-related sequence A [ Homo sapiens ]
<b>Official Symbol</b>	MICA
<b>Synonyms</b>	MICA; MHC class I polypeptide-related sequence A; PERB11.1; HLA class I antigen; stress inducible class I homolog; MHC class I chain-related protein A; MIC-A; FLJ36918; FLJ60820; MGC21250; MGC111087;
<b>Gene ID</b>	100507436

 Tel: 1-631-559-9269 1-516-512-3133

 Email: [info@creative-biomart.com](mailto:info@creative-biomart.com)  Fax: 1-631-938-8127

 45-1 Ramsey Road, Shirley, NY 11967, USA

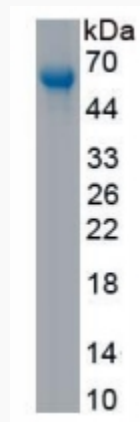
mRNA Refseq [NM\\_000247](#)

Protein Refseq [NP\\_000238](#)

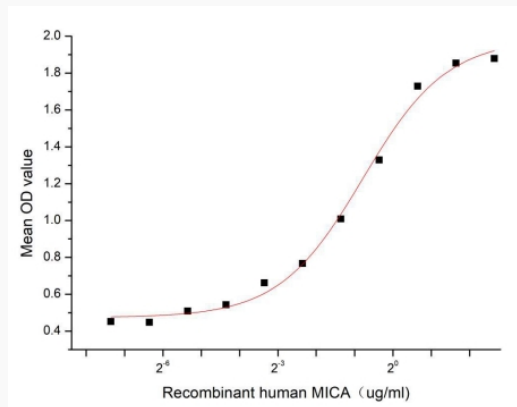
MIM [600169](#)

UniProt ID [Q29983](#)

SDS-PAGE



Activity



Tel: 1-631-559-9269 1-516-512-3133

Email: [info@creative-biomart.com](mailto:info@creative-biomart.com) Fax: 1-631-938-8127

45-1 Ramsey Road, Shirley, NY 11967, USA