

## Recombinant Human MICA Protein (Ala23-Glu308), C-Fc tagged

Cat. No. MICA-3860H    Lot. No. (See product label)

### SPECIFICATION

<b>Product Overview</b>	Recombinant human MICA (Ala23-Glu308) fused with the C-terminal Fc tag was expressed in mammalian cells.
<b>Species</b>	Human
<b>Source</b>	Mammalian Cells
<b>ProteinLength</b>	Ala23-Glu308
<b>Form</b>	Lyophilized powder/frozen liquid
<b>Molecular Mass</b>	52.06 kDa
<b>Purity</b>	>90% as determined by SDS-PAGE.
<b>Notes</b>	For research use only.
<b>Storage</b>	Use a manual defrost freezer and avoid repeated freeze thaw cycles. Store at 2 to 8 centigrade for one week. Store at -20 to -80 centigrade for twelve months from the date of receipt.
<b>Storage Buffer</b>	Supplied as solution form in PBS or lyophilized from PBS.
<b>Reconstitution</b>	Reconstitute in sterile water for a stock solution.

 Tel: 1-631-559-9269    1-516-512-3133

 Email: [info@creative-biomart.com](mailto:info@creative-biomart.com)     Fax: 1-631-938-8127

 45-1 Ramsey Road, Shirley, NY 11967, USA

**Shipping** They are shipped out with dry ice/blue ice unless customers require otherwise.

## GENE INFORMATION

**Gene Name** MICA MHC class I polypeptide-related sequence A [ Homo sapiens (human) ]

**Official Symbol** MICA

**Synonyms** MICA; MHC class I polypeptide-related sequence A; PERB11.1; HLA class I antigen; stress inducible class I homolog; MHC class I chain-related protein A; MIC-A; FLJ36918; FLJ60820; MGC21250; MGC111087;

**Gene ID** 100507436

**mRNA Refseq** NM\_000247

**Protein Refseq** NP\_000238

**MIM** 600169

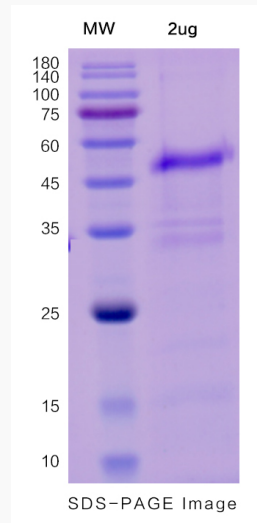
**UniProt ID** Q29983

 Tel: 1-631-559-9269 1-516-512-3133

 Email: [info@creative-biomart.com](mailto:info@creative-biomart.com)  Fax: 1-631-938-8127

 45-1 Ramsey Road, Shirley, NY 11967, USA

**SDS-PAGE**



 Tel: 1-631-559-9269 1-516-512-3133

 Email: [info@creative-biomart.com](mailto:info@creative-biomart.com)  Fax: 1-631-938-8127

 45-1 Ramsey Road, Shirley, NY 11967, USA