

Recombinant Human MICA Protein (Glu24-Gln308), C-His tagged

Cat. No. MICA-3861H Lot. No. (See product label)

SPECIFICATION

Product Overview	Recombinant human MICA (Glu24-Gln308) fused with the C-terminal His tag was expressed in Mammalian cells.
Species	Human
Source	Mammalian Cells
ProteinLength	Glu24-Gln308
Form	Lyophilized powder/frozen liquid
Molecular Mass	26.95 kDa
Purity	>90% as determined by SDS-PAGE.
Notes	For research use only.
Storage	Use a manual defrost freezer and avoid repeated freeze thaw cycles. Store at 2 to 8 centigrade for one week. Store at -20 to -80 centigrade for twelve months from the date of receipt.
Storage Buffer	Supplied as solution form in PBS or lyophilized from PBS.
Reconstitution	Reconstitute in sterile water for a stock solution.

 Tel: 1-631-559-9269 1-516-512-3133

 Email: info@creative-biomart.com  Fax: 1-631-938-8127

 45-1 Ramsey Road, Shirley, NY 11967, USA

Shipping They are shipped out with dry ice/blue ice unless customers require otherwise.

GENE INFORMATION

Gene Name MICA MHC class I polypeptide-related sequence A [Homo sapiens (human)]

Official Symbol MICA

Synonyms MICA; MHC class I polypeptide-related sequence A; PERB11.1; HLA class I antigen; stress inducible class I homolog; MHC class I chain-related protein A; MIC-A; FLJ36918; FLJ60820; MGC21250; MGC111087;

Gene ID 100507436

mRNA Refseq NM_000247

Protein Refseq NP_000238

MIM 600169

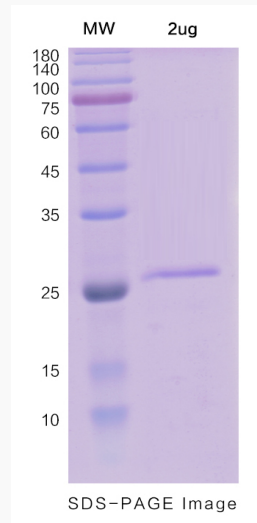
UniProt ID Q29983

 Tel: 1-631-559-9269 1-516-512-3133

 Email: info@creative-biomart.com  Fax: 1-631-938-8127

 45-1 Ramsey Road, Shirley, NY 11967, USA

SDS-PAGE



 Tel: 1-631-559-9269 1-516-512-3133

 Email: info@creative-biomart.com  Fax: 1-631-938-8127

 45-1 Ramsey Road, Shirley, NY 11967, USA