

Recombinant Human MICA protein, His-tagged

Cat. No. MICA-3970H Lot. No. (See product label)

SPECIFICATION

Product Overview	Recombinant Human MICA (Glu24-Gln308) protein was fused to His-tag at C-terminus and expressed in human 293 cells (HEK293).
Species	Human
Source	HEK293
ProteinLength	Glu24-Gln308
Description	MHC class I polypeptide-related sequence A (MICA) belongs to the MHC class I family and MIC subfamily. MICA contains one Ig-like C1-type (immunoglobulin-like) domain. Unlike classical MHC class I molecules, MICA does not form a heterodimer with beta-2-microglobulin. MICA acts as a stress-induced self-antigen that is recognized by gamma delta T-cells. MICA is ligand for the KLRK1/NKG2D receptor. MICA bind to KLRK1 leads to cell lysis.
Predicted N Terminal	Glu24
Form	Lyophilized from 0.22 µm filtered solution in PBS, pH7.4, 10% trehalose.
Molecular Mass	The protein has a calculated MW of 33.6 kDa. The protein migrates as 45-66 kDa under reducing (R) condition (SDS-PAGE) due to glycosylation.
Endotoxin	Less than 1.0 EU per µg by the LAL method.

 Tel: 1-631-559-9269 1-516-512-3133

 Email: info@creative-biomart.com  Fax: 1-631-938-8127

 45-1 Ramsey Road, Shirley, NY 11967, USA

Purity	>95% as determined by SDS-PAGE.
Storage	<p>For long term storage, the product should be stored at lyophilized state at -20 centigrade or lower.</p> <p>Please avoid repeated freeze-thaw cycles.</p> <p>This product is stable after storage at:</p> <p>-20 to -70 centigrade for 12 months in lyophilized state; -70 centigrade for 3 months under sterile conditions after reconstitution.</p>
Reconstitution	It is recommended that sterile water be added to the vial to prepare a stock solution of 0.2 ug/ul. Centrifuge the vial at 4°C before opening to recover the entire contents.

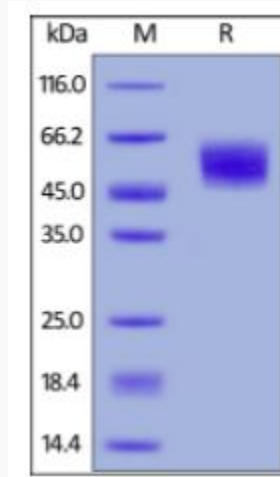
GENE INFORMATION

Gene Name	MICA
Official Symbol	MICA
Synonyms	MICA; MHC class I polypeptide-related sequence A; PERB11.1; HLA class I antigen; stress inducible class I homolog; MHC class I chain-related protein A; MIC-A; FLJ36918; FLJ60820; MGC21250; MGC111087
Gene ID	100507436
mRNA Refseq	NM_000247
Protein Refseq	NP_000238
MIM	600169
UniProt ID	Q29983

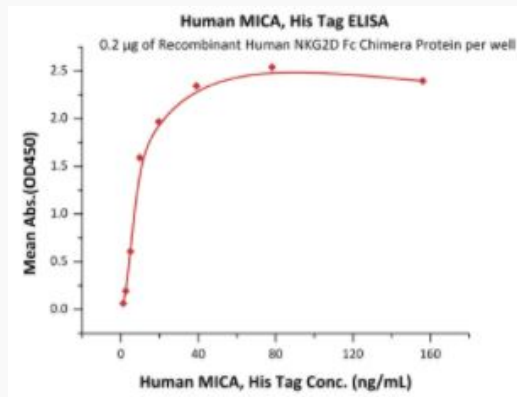
 Tel: 1-631-559-9269 1-516-512-3133

 Email: info@creative-biomart.com  Fax: 1-631-938-8127

 45-1 Ramsey Road, Shirley, NY 11967, USA

SDS-PAGE of MICA-3970H

Human MICA, His Tag on SDS-PAGE under reducing (R) condition. The gel was stained overnight with Coomassie Blue. The purity of the protein is greater than 95%.

Bioactivity-ELISA of MICA-3970H

Immobilized Recombinant Human NKG2D Fc Chimera Protein at 2 µg/mL (100 µL/well) can bind Human MICA, His Tag with a linear range of 1-20 ng/mL (QC tested).

Tel: 1-631-559-9269 1-516-512-3133

Email: info@creative-biomart.com Fax: 1-631-938-8127

45-1 Ramsey Road, Shirley, NY 11967, USA