

## Recombinant Human MICA Protein, GST-tagged

Cat. No. MICA-5319H Lot. No. (See product label)

### SPECIFICATION

|                         |  |
|-------------------------|--|
| <b>Product Overview</b> | Human MICA full-length ORF ( NP_000238.1, 1 a.a. - 383 a.a.) recombinant protein with GST-tag at N-terminal.   |
| <b>Species</b>          | Human  |
| <b>Source</b>           | Wheat Germ   |
| <b>Description</b>      | MICA encodes the highly polymorphic MHC (HLA) class I chain-related gene A. The protein product is expressed on the cell surface, although unlike canonical class I molecules does not seem to associate with beta-2-microglobulin. It is thought that MICA functions as a stress-induced antigen that is broadly recognized by intestinal epithelial gamma delta T cells. [provided by RefSeq]                          |
| <b>Molecular Mass</b>   | 69.3 kDa   |
| <b>AA Sequence</b>      | MGLGPVFLLLAGIFPFAPPGAAAEPHSLRYNLTVLSWDGVSQSGFLTEVHLDGQPFL<br>RCDRQKCRAPQGGQWAEDVLGNKTWDRETRDLTGNGKDLRMTLAHIKDQKEGLH<br>SLQEIRVCEIHEDNSTRSSQHFYYDGELFSLQNLETKEWTMPQSSRAQTLAMNVRN<br>FLKEDAMKTKTHYHAMHADCLQELRRYLKSGVLLRRTVPPMVNVTRSEASEGNITV<br>TCRASGFYPWNITLSWRQDGVSLSHDTQQWGDVLPDGNNGTYQTWVATRICQGEE<br>QRFTCYMEHSGNHSTHPVPSGKVLVLQSHWQTFHVSAAAAAIFVIIIIFYVRCCKKK<br>TSAAEGPELVSLQVLDQHPVGTSDHRDATQLGFQPLMSDLGSTGSTEGA |
| <b>Applications</b>     | Enzyme-linked Immunoabsorbent Assay<br>Western Blot (Recombinant protein)  |

 Tel: 1-631-559-9269 1-516-512-3133

 Email: [info@creative-biomart.com](mailto:info@creative-biomart.com)  Fax: 1-631-938-8127

 45-1 Ramsey Road, Shirley, NY 11967, USA

|                         |   |
|-------------------------|---|
|                         | Antibody Production<br>Protein Array  |
| <b>Notes</b>            | Best use within three months from the date of receipt of this protein.  |
| <b>Storage</b>          | Store at -80 centigrade. Aliquot to avoid repeated freezing and thawing.  |
| <b>Storage Buffer</b>   | 50 mM Tris-HCl, 10 mM reduced Glutathione, pH=8.0 in the elution buffer.  |
| <b>GENE INFORMATION</b> |   |
| <b>Gene Name</b>        | MICA MHC class I polypeptide-related sequence A [ Homo sapiens ]  |
| <b>Official Symbol</b>  | MICA  |
| <b>Synonyms</b>         | MICA; MHC class I polypeptide-related sequence A; PERB11.1; HLA class I antigen; stress inducible class I homolog; MHC class I chain-related protein A; MIC-A; FLJ36918; FLJ60820; MGC21250; MGC111087; |
| <b>Gene ID</b>          | 100507436   |
| <b>mRNA Refseq</b>      | NM_000247   |
| <b>Protein Refseq</b>   | NP_000238   |
| <b>MIM</b>              | 600169  |
| <b>UniProt ID</b>       | Q29983  |

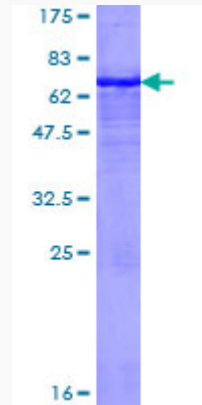
 Tel: 1-631-559-9269 1-516-512-3133

 Email: [info@creative-biomart.com](mailto:info@creative-biomart.com)  Fax: 1-631-938-8127

 45-1 Ramsey Road, Shirley, NY 11967, USA

**Quality Control**

**Testing:**



12.5% SDS-PAGE Stained with Coomassie Blue.

 Tel: 1-631-559-9269 1-516-512-3133

 Email: [info@creative-biomart.com](mailto:info@creative-biomart.com)  Fax: 1-631-938-8127

 45-1 Ramsey Road, Shirley, NY 11967, USA