

Recombinant Human MICAL2 Protein, GST-tagged

Cat. No. MICAL2-5322H Lot. No. (See product label)

SPECIFICATION

Product Overview	Human MICAL2 partial ORF (NP_055447.1, 1021 a.a. - 1123 a.a.) recombinant protein with GST-tag at N-terminal.
Species	Human
Source	Wheat Germ
Description	The protein encoded by this gene is a monooxygenase that enhances depolymerization of F-actin and is therefore involved in cytoskeletal dynamics. The encoded protein is a regulator of the SRF signaling pathway. Increased expression of this gene has been associated with cancer progression and metastasis. [provided by RefSeq, Oct 2016]
Molecular Mass	37.07 kDa
AA Sequence	FFHRECFRCSICATTLRLAAYTFDCDEGKFYCKPHFIHCKTNSKQRKRRAELKQQR EEATWQEQAAPRRDPTTESSCAVAIAIGTLEGSPPVHFSLPVLHPLL
Applications	Enzyme-linked Immunoabsorbent Assay Western Blot (Recombinant protein) Antibody Production Protein Array
Notes	Best use within three months from the date of receipt of this protein.

 Tel: 1-631-559-9269 1-516-512-3133

 Email: info@creative-biomart.com  Fax: 1-631-938-8127

 45-1 Ramsey Road, Shirley, NY 11967, USA

Storage Store at -80 centigrade. Aliquot to avoid repeated freezing and thawing.

Storage Buffer 50 mM Tris-HCl, 10 mM reduced Glutathione, pH=8.0 in the elution buffer.

GENE INFORMATION

Gene Name MICAL2 microtubule associated monooxygenase, calponin and LIM domain containing 2 [Homo sapiens]

Official Symbol MICAL2

Synonyms MICAL2; microtubule associated monooxygenase, calponin and LIM domain containing 2; protein-methionine sulfoxide oxidase MICAL2; KIAA0750; protein MICAL-2; flavoprotein oxidoreductase MICAL2; molecule interacting with CasL protein 2; MICAL-2; MICAL2PV1; MICAL2PV2; DKFZp686H2469; DKFZp686H03148;

Gene ID 9645

mRNA Refseq NM_014632

Protein Refseq NP_055447

MIM 608881

UniProt ID O94851

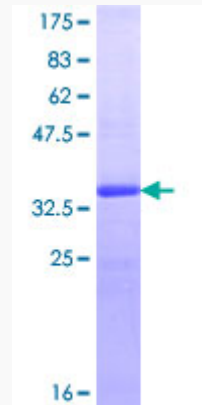
 Tel: 1-631-559-9269 1-516-512-3133

 Email: info@creative-biomart.com  Fax: 1-631-938-8127

 45-1 Ramsey Road, Shirley, NY 11967, USA

Quality Control

Testing:



12.5% SDS-PAGE Stained with Coomassie Blue.

 Tel: 1-631-559-9269 1-516-512-3133

 Email: info@creative-biomart.com  Fax: 1-631-938-8127

 45-1 Ramsey Road, Shirley, NY 11967, USA