

# Recombinant Human MICALCL Protein, Myc/DDK-tagged, C13 and N15-labeled

Cat. No. MICALCL-5237H Lot. No. (See product label)

## SPECIFICATION

### Product Overview

MICALCL MS Standard C13 and N15-labeled recombinant protein (NP\_116256) with a C-terminal MYC/DDK tag, was expressed in HEK293 cells.

### Species

Human

### Source

HEK293

### Description

MICALCL (MICAL C-Terminal Like) is a Protein Coding gene. Gene Ontology (GO) annotations related to this gene include mitogen-activated protein kinase binding. An important paralog of this gene is MICAL3.

### Molecular Mass

77.1 kDa

### AA Sequence

MSPPKDPSPSLPLPSSSSSHSSSPSSSSTSVSGNAPDGSSPPQMTASEPLSQVSR  
 GHPSPTPNFRRAVAQGAPREIPLYLPHHPKPEWAEYCLVSPGEDGLSDPAEMTS  
 DECQPAEAPLGDIGSNHRDPHPIWGWKDRSWTGQELSPLAGEDREKSTGARKEEE  
 GGPVLVKEKLGKLVLTQEQTMLLDWNDSIPESVHLKAGERISQKSAENGRGGR  
 VLKPVRLPLLPRAAGEPLPTQRGAQEKMGTPAEQAQGERNVPPPKSPLRLIANAIRR  
 SLEPLLSNSEGGKAWAKQESKTLPAQACTRSFSLRKTNSNKDGDQHSPGRNQSS  
 AFSPDPALRTHSLPNRPSKVFPALRSPPCSKIEDVPTLLEKVSLEQENFPDASKPPKK  
 RISLFSSLRLKDKSFESFLQESRQRKDIRDLFGSPKRKVLPEDSAQALEKLLQPFKST  
 SLRQAAPPPPPPPPPPPPTAGGADSKNFPLRAQVTEASSASSTSSSSADEEFD  
 PQLSLQLKEKKTLLRRRKKLEKAMKQLVKQEELKRLYKAQAIQRQLEEVEERQRASEI

Tel: 1-631-559-9269 1-516-512-3133

Email: [info@creative-biomart.com](mailto:info@creative-biomart.com) Fax: 1-631-938-8127

45-1 Ramsey Road, Shirley, NY 11967, USA



QGVRLKALRGEADSGTQDEAQLLQEWFKLVLEKNKLMRYESELLIMAELELEDH  
 QSRLEQKLREKMLKEESQKDEKDLNEEQEVFTELMQVIEQRDKLVDSLEEQRIREKA  
 EDQHFESFVFSRGCQLSRTTRTRPLEQKLISEEDLAANDILDYKDDDDKV

**Purity** > 80% as determined by SDS-PAGE and Coomassie blue staining

**Stability** Stable for 3 months from receipt of products under proper storage and handling conditions.

**Storage** Store at -80 centigrade. Avoid repeated freeze-thaw cycles.

**Concentration** 50 µg/mL as determined by BCA

**Storage Buffer** 100 mM glycine, 25 mM Tris-HCl, pH 7.3.

## GENE INFORMATION

**Gene Name** MICALCL MICAL C-terminal like [ Homo sapiens (human) ]

**Official Symbol** MICALCL

**Synonyms** MICALCL; MICAL C-terminal like; Ebitein1; MICAL C-terminal-like protein; ERK2-binding testicular protein 1; ebitein-1; mical-cl

**Gene ID** 84953

**mRNA Refseq** NM\_032867

**Protein Refseq** NP\_116256

**MIM** 612355

Tel: 1-631-559-9269 1-516-512-3133

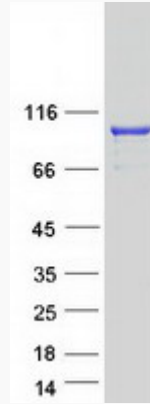
Email: [info@creative-biomart.com](mailto:info@creative-biomart.com) Fax: 1-631-938-8127

45-1 Ramsey Road, Shirley, NY 11967, USA

UniProt ID

Q6ZW33

SDS-PAGE



 Tel: 1-631-559-9269 1-516-512-3133

 Email: [info@creative-biomart.com](mailto:info@creative-biomart.com)  Fax: 1-631-938-8127

 45-1 Ramsey Road, Shirley, NY 11967, USA