

Recombinant Human MHC class I polypeptide-related sequence B Protein, His tagged

Cat. No. MICB-247H Lot. No. (See product label)

SPECIFICATION

Product Overview	Recombinant human MICB protein (Q29980-1) (Ala 23-Asp 309) with a His tag at the C-terminus was expressed in HEK293.
Species	Human
Source	HEK293
ProteinLength	23-309aa
Description	MHC class I polypeptide-related sequence B (MICB) is a protein that is encoded by the MICB gene located within MHC locus. MICB is related to MHC class I and has similar domain structure, which is made up of external $\alpha 1\alpha 2\alpha 3$ domain, transmembrane segment and C-terminal cytoplasmic tail. MICB is a stress-induced ligand for NKG2D receptor. The heat shock stress pathway is involved in the regulation of MICB expression as transcription of MICB is regulated by promoter heat shock element.
Tag	C-His
Molecular Mass	34.1 kDa
Endotoxin	Less than 1.0 EU/ μ g by the LAL method.
Purity	>95% as determined by SDS-PAGE.

 Tel: 1-631-559-9269 1-516-512-3133

 Email: info@creative-biomart.com  Fax: 1-631-938-8127

 45-1 Ramsey Road, Shirley, NY 11967, USA

Storage Please avoid repeated freeze-thaw cycles. Samples are stable for up to twelve months from date of receipt at -20 to -80 centigrade. It is recommended that aliquot the reconstituted solution to minimize freeze-thaw cycles.

Storage Buffer Lyophilized from a 0.2 µm filtered solution of PBS, pH7.4, 5% Trehalose, 5% mannitol.

Reconstitution Reconstitute at 250 µg/mL in sterile water.

GENE INFORMATION

Gene Name MICB MHC class I polypeptide-related sequence B [Homo sapiens (human)]

Official Symbol MICB

Synonyms MICB; MHC class I polypeptide-related sequence B; PERB11.2; MIC-B; MHC class I mic-B antigen; stress inducible class I homolog; MHC class I chain-related protein B; MHC class I-like molecule PERB11.2-IMX;

Gene ID 4277

mRNA Refseq NM_005931

Protein Refseq NP_005922

MIM 602436

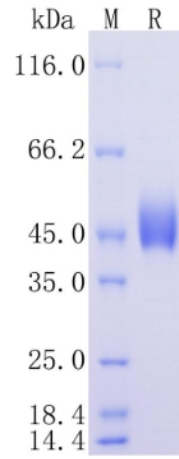
UniProt ID Q29980

 Tel: 1-631-559-9269 1-516-512-3133

 Email: info@creative-biomart.com  Fax: 1-631-938-8127

 45-1 Ramsey Road, Shirley, NY 11967, USA

**Protein on SDS-
PAGE under
reducing (R)
condition.**



 Tel: 1-631-559-9269 1-516-512-3133

 Email: info@creative-biomart.com  Fax: 1-631-938-8127

 45-1 Ramsey Road, Shirley, NY 11967, USA