

Recombinant Human MHC Class I Polypeptide-Related Sequence B

Cat. No. MICB-5194H Lot. No. (See product label)

SPECIFICATION

Product Overview	Recombinant Human MICB has 326 amino acid residues containing the extracellular domain of mature human MICB (amino acid residues Ala23-Tyr312).
Species	Human
Source	Human
Protein Length	23-312 a.a.
Description	This gene encodes a heavily glycosylated protein which is a ligand for the NKG2D type II receptor. Binding of the ligand activates the cytolytic response of natural killer (NK) cells, CD8 alpha beta T cells, and gamma delta T cells which express the receptor. This protein is stress-induced and is similar to MHC class I molecules; however, it does not associate with beta-2-microglobulin or bind peptides.
Form	Lyophilized from a 0.2 µm sterile filtered solution of PBS, pH 7.0.
Purity	>95% by SDS-PAGE and HPLC analyses.
Molecular Weight	37 kDa
Biological Activity	Measured by its ability to bind MICB antibody in an ELISA.
Endotoxin	< 0.1 ng/µg

 Tel: 1-631-559-9269 1-516-512-3133

 Email: info@creative-biomart.com  Fax: 1-631-938-8127

 45-1 Ramsey Road, Shirley, NY 11967, USA

Reconstitution Centrifuge vial prior to opening. Add sterile distilled water or aqueous buffer containing 0.1% BSA to a concentration of 0.1-1.0 mg/ml. Please note that the addition of any carrier protein into this product may produce unwanted endotoxin. This depends upon the particular application employed. Further dilutions should be made in appropriate buffered solutions.

Storage Stable at 2-8°C, but best kept desiccated -20°C. Upon reconstitution, stable for up to 1 week at 2-8°C. For longer term, store in working aliquots below -20°C. Avoid repeated freeze/thaw cycles.

Official Symbol MICB

Pathways Adaptive Immunity Signaling, Immune System, Immunoregulatory interactions between a Lymphoid and a non-Lymphoid cell, Natural killer cell mediated cytotoxicity

GENE INFORMATION

Gene Name MICB MHC class I polypeptide-related sequence B [Homo sapiens]

Synonyms MICB; MHC class I polypeptide-related sequence B; PERB11.2; MICB; MIC-B; OTTHUMP00000029089; MHC class I polypeptide-related sequence B; MHC class I molecule; MHC class I mic-B antigen; stress inducible class I homolog; MHC class I chain-related protein B; MHC class I-like molecule PERB11.2-IMX; OTTHUMP00000035091; TTHUMP00000035588

Gene ID 4277

mRNA Refseq NM_005931

Protein Refseq NP_005922

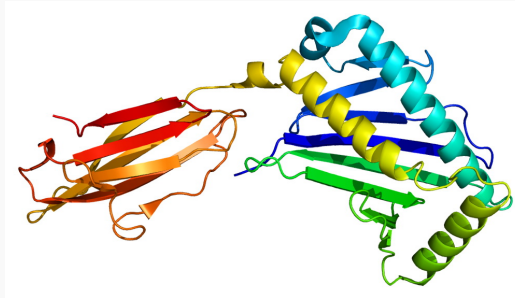
 Tel: 1-631-559-9269 1-516-512-3133

 Email: info@creative-biomart.com  Fax: 1-631-938-8127

 45-1 Ramsey Road, Shirley, NY 11967, USA

MIM	602436
UniProt ID	Q29980
Chromosome Location	6p21.3
Function	natural killer collectin-like receptor binding

PDBrendering based on 1je6.



 Tel: 1-631-559-9269 1-516-512-3133

 Email: info@creative-biomart.com  Fax: 1-631-938-8127

 45-1 Ramsey Road, Shirley, NY 11967, USA