

Recombinant Human MICB Protein, GST-tagged

Cat. No. MICB-5326H Lot. No. (See product label)

SPECIFICATION

Product Overview	Human MICB full-length ORF (AAH44218.1, 1 a.a. - 340 a.a.) recombinant protein with GST-tag at N-terminal.
Species	Human
Source	Wheat Germ
Description	This gene encodes a heavily glycosylated protein which is a ligand for the NKG2D type II receptor. Binding of the ligand activates the cytolytic response of natural killer (NK) cells, CD8 alpha beta T cells, and gamma delta T cells which express the receptor. This protein is stress-induced and is similar to MHC class I molecules; however, it does not associate with beta-2-microglobulin or bind peptides. [provided by RefSeq]
Molecular Mass	64 kDa
AA Sequence	MGLGRVLLFLAVAFPFAPPAAAAEPHSLRYNLMVLSQDGSVQSGFLAEGHLDGQPF LRYDRQKRRRAKPQGQWAEDVLGAETWDTETEDLTENGQDLRRTLTHIKDQKGV PQSSRAQTLAMNVTNFWKEDAMKTKTHYRAMQADCLQKLQRYLKSGVAIRRTVPPMV NVTCSSEVSEGNITVTCRASSFYPRNITLTWRQDGVSLSHNTQQWGDVLPDNGTY QTWVATRIRQGEEQRFTCYMEHSGNHGTHPVPSGKALVLQSQRTDFPYVSAAMPC FVIIILCVPCCKKKTSA AEGPELVSLQVLDQHPVGTGDHRDAAQLGFQPLMSATGST GSTEGA
Applications	Enzyme-linked Immunoabsorbent Assay

 Tel: 1-631-559-9269 1-516-512-3133

 Email: info@creative-biomart.com  Fax: 1-631-938-8127

 45-1 Ramsey Road, Shirley, NY 11967, USA

Western Blot (Recombinant protein)
 Antibody Production
 Protein Array

Notes	Best use within three months from the date of receipt of this protein.
Storage	Store at -80 centigrade. Aliquot to avoid repeated freezing and thawing.
Storage Buffer	50 mM Tris-HCl, 10 mM reduced Glutathione, pH=8.0 in the elution buffer.

GENE INFORMATION

Gene Name	MICB MHC class I polypeptide-related sequence B [Homo sapiens]
Official Symbol	MICB
Synonyms	MICB; MHC class I polypeptide-related sequence B; PERB11.2; MIC-B; MHC class I mic-B antigen; stress inducible class I homolog; MHC class I chain-related protein B; MHC class I-like molecule PERB11.2-IMX;
Gene ID	4277
mRNA Refseq	NM_005931
Protein Refseq	NP_005922
MIM	602436
UniProt ID	Q29980

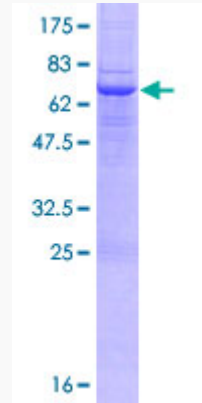
 Tel: 1-631-559-9269 1-516-512-3133

 Email: info@creative-biomart.com  Fax: 1-631-938-8127

 45-1 Ramsey Road, Shirley, NY 11967, USA

Quality Control

Testing:



12.5% SDS-PAGE Stained with Coomassie Blue.

 Tel: 1-631-559-9269 1-516-512-3133

 Email: info@creative-biomart.com  Fax: 1-631-938-8127

 45-1 Ramsey Road, Shirley, NY 11967, USA