

## Recombinant Human MICB protein, His-Avi-tagged

Cat. No. MICB-980H Lot. No. (See product label)

### SPECIFICATION

<b>Product Overview</b>	Recombinant Human MICB protein(Q29980-1)(Ala23-Gly298), fused with C-terminal His and Avi tag, was expressed in HEK293.
<b>Species</b>	Human
<b>Source</b>	HEK293
<b>ProteinLength</b>	Ala23-Gly298
<b>Tag</b>	C-His-Avi
<b>Form</b>	Lyophilized from 0.22µm filtered solution in PBS (pH 7.4). Normally 5% trehalose is added as protectant before lyophilization.
<b>Bio-activity</b>	Immobilized Human MICB, His Tag at 5µg/ml (100µl/well) on the plate. Dose response curve for Human NKG2D, hFc Tag with the EC50 of 0.58µg/ml determined by ELISA.
<b>Molecular Mass</b>	The protein has a predicted MW of 34.4 kDa. Due to glycosylation, the protein migrates to 48-65 kDa based on Tris-Bis PAGE result.
<b>Endotoxin</b>	Less than 1EU per µg by the LAL method.
<b>Purity</b>	> 95% as determined by Tris-Bis PAGE; > 95% as determined by HPLC

 Tel: 1-631-559-9269 1-516-512-3133

 Email: [info@creative-biomart.com](mailto:info@creative-biomart.com)  Fax: 1-631-938-8127

 45-1 Ramsey Road, Shirley, NY 11967, USA

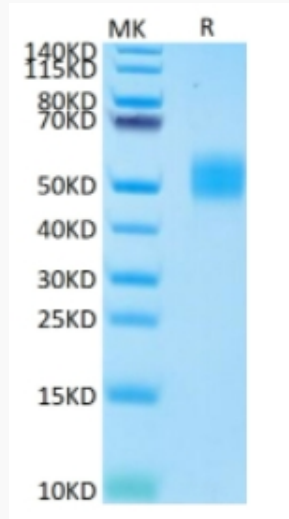
<b>Storage</b>	Reconstituted protein stable at -80°C for 12 months, 4°C for 1 week. Use a manual defrost freezer and avoid repeated freeze-thaw cycles.
<b>Reconstitution</b>	Centrifuge tubes before opening. Reconstituting to a concentration more than 100 µg/ml is recommended. Dissolve the lyophilized protein in distilled water.
<b>GENE INFORMATION</b>	
<b>Gene Name</b>	MICB MHC class I polypeptide-related sequence B [ Homo sapiens ]
<b>Official Symbol</b>	MICB
<b>Synonyms</b>	MICB; MHC class I polypeptide-related sequence B; PERB11.2; MIC-B; MHC class I mic-B antigen; stress inducible class I homolog; MHC class I chain-related protein B; MHC class I-like molecule PERB11.2-IMX;
<b>Gene ID</b>	4277
<b>mRNA Refseq</b>	NM_005931
<b>Protein Refseq</b>	NP_005922
<b>MIM</b>	602436
<b>UniProt ID</b>	Q29980

 Tel: 1-631-559-9269 1-516-512-3133

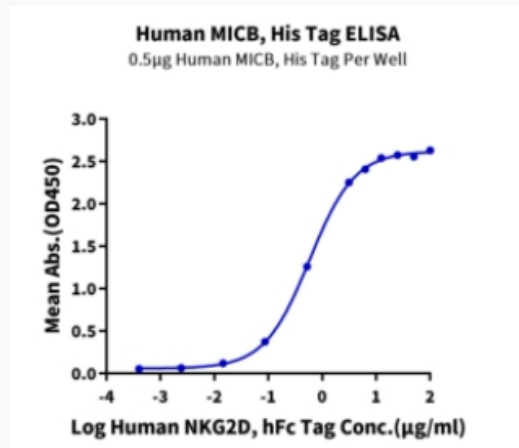
 Email: [info@creative-biomart.com](mailto:info@creative-biomart.com)  Fax: 1-631-938-8127

 45-1 Ramsey Road, Shirley, NY 11967, USA

**Tris-Bis PAGE**



**ELISA Data**



 Tel: 1-631-559-9269 1-516-512-3133

 Email: [info@creative-biomart.com](mailto:info@creative-biomart.com)  Fax: 1-631-938-8127

 45-1 Ramsey Road, Shirley, NY 11967, USA