

## Recombinant Human MICB protein, His-Avi-tagged, Biotinylated

**Cat. No.** MICB-980HB    **Lot. No.** (See product label)

### SPECIFICATION

|                          |  |
|--------------------------|--|
| <b>Product Overview</b>  | Biotinylated Recombinant Human MICB protein(Q29980)(Ala23-Gly298), fused with C-terminal His and Avi tag, was expressed in HEK293.   |
| <b>Species</b>           | Human  |
| <b>Source</b>            | HEK293   |
| <b>ProteinLength</b>     | Ala23-Gly298   |
| <b>Tag</b>               | C-His-Avi  |
| <b>Conjugation/Label</b> | Biotin   |
| <b>Form</b>              | Lyophilized from 0.22µm filtered solution in PBS (pH 7.4). Normally 5% trehalose is added as protectant before lyophilization.   |
| <b>Bio-activity</b>      | Immobilized Biotinylated Human MICB, His Tag at 2ug/ml (100ul/well) on the streptavidin precoated plate (5ug/ml). Dose response curve for Human NKG2D, hFc Tag with the EC50 of 0.19ug/ml determined by ELISA. |
| <b>Molecular Mass</b>    | The protein has a predicted MW of 34.4 kDa. Due to glycosylation, the protein migrates to 48-65 kDa based on Tris-Bis PAGE result.   |
| <b>Endotoxin</b>         | Less than 1EU per µg by the LAL method.  |

 Tel: 1-631-559-9269    1-516-512-3133

 Email: [info@creative-biomart.com](mailto:info@creative-biomart.com)     Fax: 1-631-938-8127

 45-1 Ramsey Road, Shirley, NY 11967, USA

|                       |   |
|-----------------------|---|
| <b>Purity</b>         | > 95% as determined by Tris-Bis PAGE;> 95% as determined by HPLC  |
| <b>Storage</b>        | Reconstituted protein stable at -80°C for 12 months, 4°C for 1 week. Use a manual defrost freezer and avoid repeated freeze-thaw cycles.                    |
| <b>Reconstitution</b> | Centrifuge tubes before opening. Reconstituting to a concentration more than 100 µg/ml is recommended. Dissolve the lyophilized protein in distilled water. |
| <b>Conjugation</b>    | Biotin  |

## GENE INFORMATION

|                        |  |
|------------------------|--|
| <b>Gene Name</b>       | MICB MHC class I polypeptide-related sequence B [ Homo sapiens ]   |
| <b>Official Symbol</b> | MICB   |
| <b>Synonyms</b>        | MICB; MHC class I polypeptide-related sequence B; PERB11.2; MIC-B; MHC class I mic-B antigen; stress inducible class I homolog; MHC class I chain-related protein B; MHC class I-like molecule PERB11.2-IMX; |
| <b>Gene ID</b>         | 4277   |
| <b>mRNA Refseq</b>     | NM_005931  |
| <b>Protein Refseq</b>  | NP_005922  |
| <b>MIM</b>             | 602436   |
| <b>UniProt ID</b>      | Q29980   |

 Tel: 1-631-559-9269 1-516-512-3133

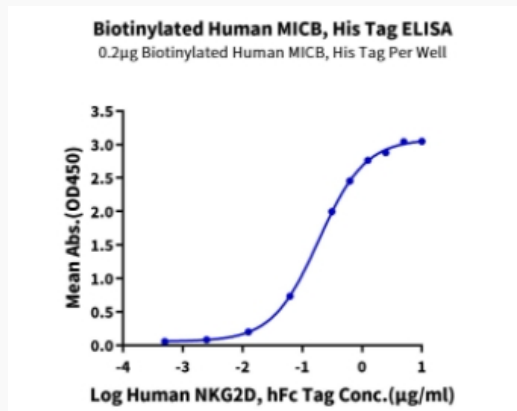
 Email: [info@creative-biomart.com](mailto:info@creative-biomart.com)  Fax: 1-631-938-8127

 45-1 Ramsey Road, Shirley, NY 11967, USA

**Tris-Bis PAGE**



**ELISA Data**



 Tel: 1-631-559-9269 1-516-512-3133

 Email: [info@creative-biomart.com](mailto:info@creative-biomart.com)  Fax: 1-631-938-8127

 45-1 Ramsey Road, Shirley, NY 11967, USA