

Recombinant Human MICU1 Protein, MYC/DDK-tagged, C13 and N15-labeled

Cat. No. MICU1-279H **Lot. No.** (See product label)

SPECIFICATION

Product Overview

CBARA1 MS Standard C13 and N15-labeled recombinant protein (NP_006068) with a C-terminal MYC/DDK tag, was expressed in HEK293 cells.

Species

Human

Source

HEK293

Description

This gene encodes an essential regulator of mitochondrial Ca²⁺ uptake under basal conditions. The encoded protein interacts with the mitochondrial calcium uniporter, a mitochondrial inner membrane Ca²⁺ channel, and is essential in preventing mitochondrial Ca²⁺ overload, which can cause excessive production of reactive oxygen species and cell stress. Alternatively spliced transcript variants encoding different isoforms have been described. [provided by RefSeq, Mar 2013]

Molecular Mass

54.4 kDa

AA Sequence

```
MFRLNSLSALAEAVGSRWYHGGSQPIQIRRLMMVAFLGASAVTASTGLLWKRAH
AESPPCVDNLKSDIGDKGKNKDEGDVCNHEKKTADLAPHPEEKKKKRSGRDRKV
MEYENRIRAYSTPDKIFRYFATLKVISEPGAEVFMTPEDFVRSITPNEKQPEHLGLD
QYIIKRFDGKKISQEREKFADEGSIFYTLGECGLISFSDYIFLTTVLSTPQRNFEIAFKM
FDLNGDGEVDMEEFEQVQSIIRSQTSMGMRHRDRPTTGNTLKSGLCSALTTYFFGA
DLKGKLTIKNFLEFQRKLQHDVCLKLEFERHDPVDGRITERQFGGMLLAYSGVQSKKL
TAMQRQLKKHFKEGKGLTFQEVENFFTLKNINDVDTALSFYHMAGASLDKVTMQQ
```

 Tel: 1-631-559-9269 1-516-512-3133

 Email: info@creative-biomart.com  Fax: 1-631-938-8127

 45-1 Ramsey Road, Shirley, NY 11967, USA

VARTVAKVELSDHVCDVVFALFDCDGNGELSNKEFVSIMKQRLMRGLEKPKDMGFT
RLMQAMWKCAQETAWDFALPKQTRTRPLEQKLISEEDLAANDILDYKDDDDKV

Purity > 80% as determined by SDS-PAGE and Coomassie blue staining

Stability Stable for 3 months from receipt of products under proper storage and handling conditions.

Storage Store at -80 centigrade. Avoid repeated freeze-thaw cycles.

Concentration 50 µg/mL as determined by BCA

Storage Buffer 100 mM glycine, 25 mM Tris-HCl, pH 7.3.

GENE INFORMATION

Gene Name MICU1 mitochondrial calcium uptake 1 [Homo sapiens (human)]

Official Symbol MICU1

Synonyms MICU1; mitochondrial calcium uptake 1; calcium binding atopy related autoantigen 1, CBARA1; calcium uptake protein 1, mitochondrial; CALC; EFHA3; FLJ12684; ara CALC; atopy related autoantigen; atopy-related autoantigen CALC; calcium binding atopy-related autoantigen 1; calcium-binding atopy-related autoantigen 1; CBARA1; DKFZp564C246;

Gene ID 10367

mRNA Refseq NM_006077

Protein Refseq NP_006068

 Tel: 1-631-559-9269 1-516-512-3133

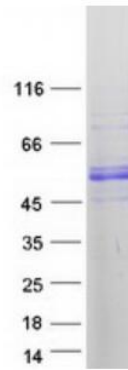
 Email: info@creative-biomart.com  Fax: 1-631-938-8127

 45-1 Ramsey Road, Shirley, NY 11967, USA

MIM 605084

UniProt ID Q9BPX6

SDS-PAGE



 Tel: 1-631-559-9269 1-516-512-3133

 Email: info@creative-biomart.com  Fax: 1-631-938-8127

 45-1 Ramsey Road, Shirley, NY 11967, USA