

Recombinant Human MICU1 Protein, GST-tagged

Cat. No. MICU1-5141H Lot. No. (See product label)

SPECIFICATION

Product Overview	Human CBARA1 full-length ORF (AAH04190.1, 1 a.a. - 476 a.a.) recombinant protein with GST-tag at N-terminal.
Species	Human
Source	Wheat Germ
Description	This gene encodes an essential regulator of mitochondrial Ca ²⁺ uptake under basal conditions. The encoded protein interacts with the mitochondrial calcium uniporter, a mitochondrial inner membrane Ca ²⁺ channel, and is essential in preventing mitochondrial Ca ²⁺ overload, which can cause excessive production of reactive oxygen species and cell stress. Alternatively spliced transcript variants encoding different isoforms have been described. [provided by RefSeq, Mar 2013]
Molecular Mass	80.8 kDa
AA Sequence	MFRLNSLSALAEAVGSRWYHGGSQPIQIRRLMMVAFLGASAVTASTGLLWKRAH AESPPCVDNLKSDIGDKGKNKDEGDVCNHEKKTADLAPHPEEKKKKRSRFRDRKV MEYENRIRAYSTPDKIFRYFATLKVISEPGEAEVFMTPEDFVRSITPNEKQPEHLGLD QYIIKRFDGKKISQEREKFADEGSIFYTLGECGLISFSDYIFLTTVLSTPQRNFEIAFKM FDLNGDGEVDMEEFEQVQSIIRSQTSMGMRHRDRPTTGNTLKSGLC SALT TYFFGA DLKGKLTIKNFLEFQRKLQHDVLEKLEFERHDPVDGRITERQFGGMLLAYSQVQSKKL TAMQRQLKKHFKEGKGLTFQEVENFFTLKNINDVDTALS FYHMAGASLDKVTMQQ VARTVAKVELSDHVCDVVFALFDCDNGELSNKEFVSIMKQRLMRGLEKPKDMGFT

 Tel: 1-631-559-9269 1-516-512-3133

 Email: info@creative-biomart.com  Fax: 1-631-938-8127

 45-1 Ramsey Road, Shirley, NY 11967, USA

RLMQAMWKCAQETAWDFALPKQ

Applications

Enzyme-linked Immunoabsorbent Assay
 Western Blot (Recombinant protein)
 Antibody Production
 Protein Array

Notes

Best use within three months from the date of receipt of this protein.

Storage

Store at -80 centigrade. Aliquot to avoid repeated freezing and thawing.

Storage Buffer

50 mM Tris-HCl, 10 mM reduced Glutathione, pH=8.0 in the elution buffer.

GENE INFORMATION

Gene Name

MICU1 mitochondrial calcium uptake 1 [Homo sapiens (human)]

Official Symbol

MICU1

Synonyms

CBARA1; MICU1; mitochondrial calcium uptake 1; CALC; EFHA3; MPXPS; calcium uptake protein 1, mitochondrial; ara CALC; atopy-related autoantigen CALC; calcium-binding atopy-related autoantigen 1

Gene ID

10367

mRNA Refseq

NM_001195518

Protein Refseq

NP_001182447

MIM

605084

 Tel: 1-631-559-9269 1-516-512-3133

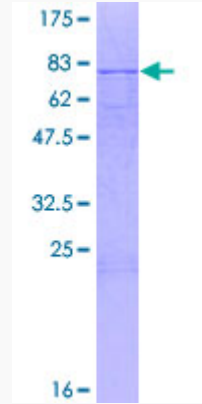
 Email: info@creative-biomart.com  Fax: 1-631-938-8127

 45-1 Ramsey Road, Shirley, NY 11967, USA

UniProt ID

Q9BPX6

Quality Control
Testing



12.5% SDS-PAGE Stained with Coomassie Blue.

 Tel: 1-631-559-9269 1-516-512-3133

 Email: info@creative-biomart.com  Fax: 1-631-938-8127

 45-1 Ramsey Road, Shirley, NY 11967, USA