

## Recombinant Human MID1 Protein, GST-tagged

Cat. No. MID1-5328H Lot. No. (See product label)

### SPECIFICATION

<b>Product Overview</b>	Human MID1 partial ORF ( AAH53626, 441 a.a. - 540 a.a.) recombinant protein with GST-tag at N-terminal.
<b>Species</b>	Human
<b>Source</b>	Wheat Germ
<b>Description</b>	<p>The protein encoded by this gene is a member of the tripartite motif (TRIM) family, also known as the RING-B box-coiled coil (RBCC) subgroup of RING finger proteins. The TRIM motif includes three zinc-binding domains, a RING, a B-box type 1 and a B-box type 2, and a coiled-coil region. This protein forms homodimers which associate with microtubules in the cytoplasm. The protein is likely involved in the formation of multiprotein structures acting as anchor points to microtubules. Mutations in this gene have been associated with the X-linked form of Opitz syndrome, which is characterized by midline abnormalities such as cleft lip, laryngeal cleft, heart defects, hypospadias, and agenesis of the corpus callosum. This gene was also the first example of a gene subject to X inactivation in human while escaping it in mouse. Several different transcript variants are generated by alternate splicing; however, the full-length nature of some of the variants has not been determined. [provided by RefSeq]</p>
<b>Molecular Mass</b>	36.63 kDa
<b>AA Sequence</b>	PNIKQNHYYTVHGLQSGTKYIFMVKAINQAGSRSSSEPGKLTNSQPFLDPKSAHRKL

 Tel: 1-631-559-9269 1-516-512-3133

 Email: [info@creative-biomart.com](mailto:info@creative-biomart.com)  Fax: 1-631-938-8127

 45-1 Ramsey Road, Shirley, NY 11967, USA

KVSHDNLTVRDESSSKKSHTPERFTSQGSYGVAGNVFIDSGR

**Applications**

Enzyme-linked Immunoabsorbent Assay  
 Western Blot (Recombinant protein)  
 Antibody Production  
 Protein Array

**Notes**

Best use within three months from the date of receipt of this protein.

**Storage**

Store at -80 centigrade. Aliquot to avoid repeated freezing and thawing.

**Storage Buffer**

50 mM Tris-HCl, 10 mM reduced Glutathione, pH=8.0 in the elution buffer.

## GENE INFORMATION

**Gene Name**

MID1 midline 1 (Opitz/BBB syndrome) [ Homo sapiens ]

**Official Symbol**

MID1

**Synonyms**

MID1; midline 1 (Opitz/BBB syndrome); midline-1; FXY; OS; RNF59; TRIM18; RING finger protein 59; midline 1 RING finger protein; tripartite motif protein TRIM18; putative transcription factor XPRF; tripartite motif-containing protein 18; zinc finger on X and Y, mouse, homolog of; OSX; OGS1; XPRF; BBBG1; GBBB1; MIDIN; ZNFX; FLJ57031; FLJ58683; FLJ76288;

**Gene ID**

4281

**mRNA Refseq**

NM\_000381

**Protein Refseq**

NP\_000372

 Tel: 1-631-559-9269 1-516-512-3133

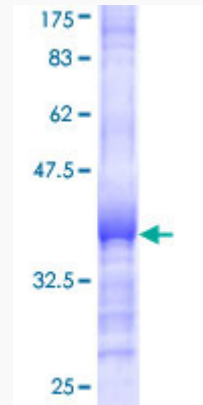
 Email: [info@creative-biomart.com](mailto:info@creative-biomart.com)  Fax: 1-631-938-8127

 45-1 Ramsey Road, Shirley, NY 11967, USA

**MIM** 300552

**UniProt ID** O15344

**Quality Control  
Testing:**



12.5% SDS-PAGE Stained with Coomassie Blue.

 Tel: 1-631-559-9269 1-516-512-3133

 Email: [info@creative-biomart.com](mailto:info@creative-biomart.com)  Fax: 1-631-938-8127

 45-1 Ramsey Road, Shirley, NY 11967, USA