

Recombinant Human MIDN Protein, GST-tagged

Cat. No. MIDN-5332H **Lot. No.** (See product label)

SPECIFICATION

Product Overview	Human MIDN full-length ORF (AAH94778.1, 1 a.a. - 468 a.a.) recombinant protein with GST-tag at N-terminal.
Species	Human
Source	Wheat Germ
Description	MIDN (Midnolin) is a Protein Coding gene. GO annotations related to this gene include kinase binding.
Molecular Mass	75.6 kDa
AA Sequence	MEPQPGGARSCRRGAPGGACELGPAAEAAPMSLAIHSTTGTRYDLAVPPDETVEG LRKRLSQRLKVPKERLALLHKDTRLSSGKLQEFVGDGSKLTLVPTVEAGLMSQAS RPEQSVMQALESLTETQVSDFLSGRSPLTLALRVGDHMMFVQLQLAAQHAPLQHR HVLAAAAAAAAARGDPSIASPVSSPCRPVSSAARVPPVPTSPSPASPSPITAGSFRS HAASTTCPEQMDCSPTASSSASPGASTTSTPGASPAPRSRKPGAVIESFVNHAPGV FSGTFSGTLHPNCQDSSGRPRRDIGTILQILNDLLSATRHYQGMPPSLAQLRCHAQC SPASPAPDLAPRTTSCEKLTAAAPSALLQGQSQIRMCKPPGDRLRQTENRATRCKV ERLQLLLQKRLRRKARRDARGPYHWSPSRKAGRSDSSSSGGGGSPSEASGLGL DFEDSVWKPEANPDIKSEFVVA
Applications	Enzyme-linked Immunoabsorbent Assay Western Blot (Recombinant protein) Antibody Production

 Tel: 1-631-559-9269 1-516-512-3133

 Email: info@creative-biomart.com  Fax: 1-631-938-8127

 45-1 Ramsey Road, Shirley, NY 11967, USA

Protein Array

Notes	Best use within three months from the date of receipt of this protein.
Storage	Store at -80 centigrade. Aliquot to avoid repeated freezing and thawing.
Storage Buffer	50 mM Tris-HCl, 10 mM reduced Glutathione, pH=8.0 in the elution buffer.

GENE INFORMATION

Gene Name	MIDN midnolin [Homo sapiens (human)]
Official Symbol	MIDN
Synonyms	MIDN; midnolin; midnolin; midbrain nucleolar protein
Gene ID	90007
mRNA Refseq	NM_177401
Protein Refseq	NP_796375
MIM	606700
UniProt ID	Q504T8

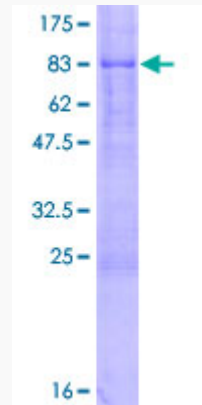
 Tel: 1-631-559-9269 1-516-512-3133

 Email: info@creative-biomart.com  Fax: 1-631-938-8127

 45-1 Ramsey Road, Shirley, NY 11967, USA

Quality Control

Testing:



12.5% SDS-PAGE Stained with Coomassie Blue.

 Tel: 1-631-559-9269 1-516-512-3133

 Email: info@creative-biomart.com  Fax: 1-631-938-8127

 45-1 Ramsey Road, Shirley, NY 11967, USA