

Recombinant Human MIF Protein

Cat. No. MIF-033H Lot. No. (See product label)

SPECIFICATION

Product Overview	Recombinant human MIF protein without tag was expressed in E. coli.
Species	Human
Source	E.coli
Description	This gene encodes a lymphokine involved in cell-mediated immunity, immunoregulation, and inflammation. It plays a role in the regulation of macrophage function in host defense through the suppression of anti-inflammatory effects of glucocorticoids. This lymphokine and the JAB1 protein form a complex in the cytosol near the peripheral plasma membrane, which may indicate an additional role in integrin signaling pathways.
Molecular Mass	12.6 kDa
Purity	≥95% as determined by SDS-PAGE
Unit Definition	One unit is defined as the amount of enzyme required to tautomerize 1 nmole of L-dopachrome (5,6-dihydroxyindole-2-carboxylate methyl ester) per minute at 21 centigrade in 40 mM Bis-Tris, pH 6.2, 0.8 mM EDTA, containing 260 μM L-dopachrome methyl ester, and 510 μM sodium periodate.
Stability	≥ 1 year
Storage	At -80 centigrade.

 Tel: 1-631-559-9269 1-516-512-3133

 Email: info@creative-biomart.com  Fax: 1-631-938-8127

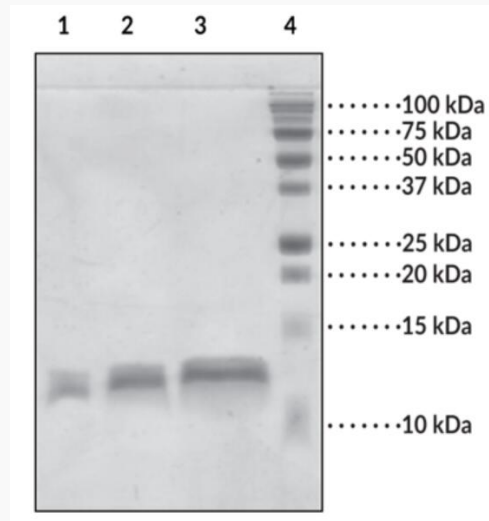
 45-1 Ramsey Road, Shirley, NY 11967, USA

GENE INFORMATION

Gene Name	MIF macrophage migration inhibitory factor [Homo sapiens (human)]
Official Symbol	MIF
Synonyms	MIF; macrophage migration inhibitory factor; GIF; GLIF; MMIF; macrophage migration inhibitory factor; L-dopachrome isomerase; L-dopachrome tautomerase; epididymis secretory sperm binding protein; macrophage migration inhibitory factor (glycosylation-inhibiting factor); phenylpyruvate tautomerase; EC 5.3.2.1; EC 5.3.3.12
Gene ID	4282
mRNA Refseq	NM_002415
Protein Refseq	NP_002406
MIM	153620
UniProt ID	P14174

 Tel: 1-631-559-9269 1-516-512-3133 Email: info@creative-biomart.com  Fax: 1-631-938-8127 45-1 Ramsey Road, Shirley, NY 11967, USA

**SDS-PAGE analysis
of MIF**



Lane 1: MIF (2 µg)
Lane 2: MIF (5 µg)
Lane 3: MIF (10 µg)
Lane 4: MW Markers

 Tel: 1-631-559-9269 1-516-512-3133

 Email: info@creative-biomart.com  Fax: 1-631-938-8127

 45-1 Ramsey Road, Shirley, NY 11967, USA