

## Recombinant Human MIF protein, His-tagged

Cat. No. MIF-1047H Lot. No. (See product label)

### SPECIFICATION

<b>Product Overview</b>	Recombinant Human MIF protein(P14174)(130aa), fused with N-terminal His tag, was expressed in E. coli.
<b>Species</b>	Human
<b>Source</b>	E.coli
<b>Protein Length</b>	130aa(including fusion tag)
<b>Tag</b>	N-His
<b>Form</b>	20mM Tris.Cl, 50mM NaCl, 50% Glycerol, pH8.0.
<b>Molecular Mass</b>	14.4kDa(including fusion tag)
<b>Storage</b>	Store at -80°C and avoid repeated freeze-thaw cycles.
<b>Reconstitution</b>	It is recommended that sterile water be added to the vial to prepare a stock solution of 0.2 ug/ul. Centrifuge the vial at 4°C before opening to recover the entire contents.

### GENE INFORMATION

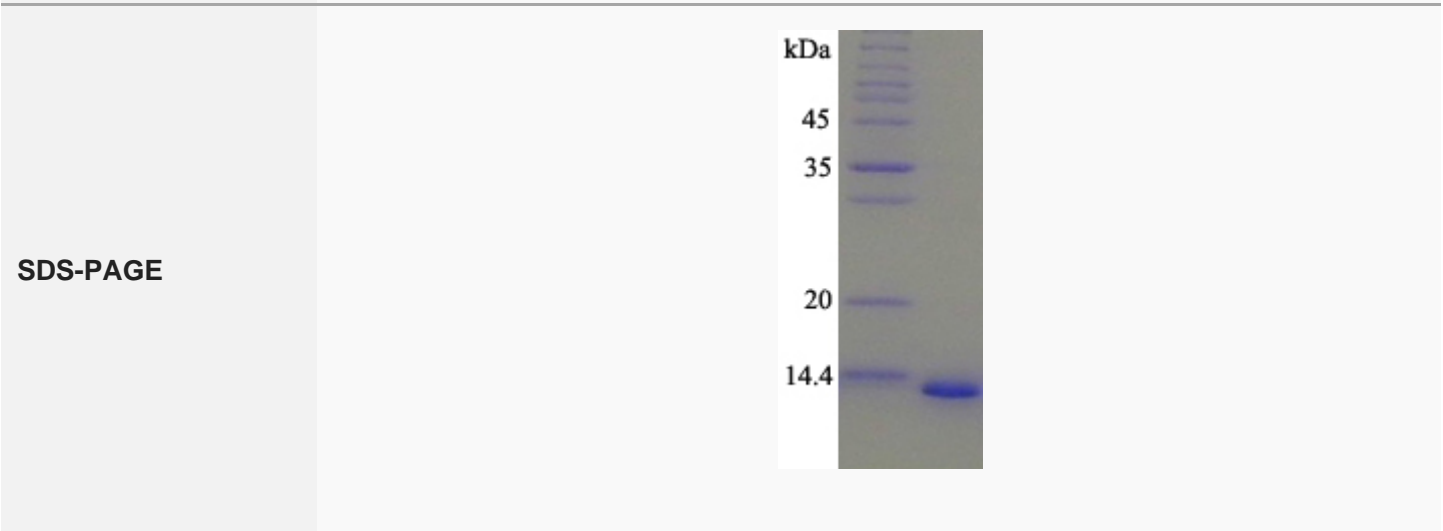
<b>Gene Name</b>	MIF macrophage migration inhibitory factor (glycosylation-inhibiting factor) [ Homo sapiens ]
------------------	---

 Tel: 1-631-559-9269 1-516-512-3133

 Email: [info@creative-biomart.com](mailto:info@creative-biomart.com)  Fax: 1-631-938-8127

 45-1 Ramsey Road, Shirley, NY 11967, USA

<b>Official Symbol</b>	MIF
<b>Synonyms</b>	MIF; macrophage migration inhibitory factor (glycosylation-inhibiting factor); GLIF; macrophage migration inhibitory factor; GIF; L-dopachrome isomerase; L-dopachrome tautomerase; phenylpyruvate tautomerase; MMIF;
<b>Gene ID</b>	4282
<b>mRNA Refseq</b>	NM_002415
<b>Protein Refseq</b>	NP_002406
<b>MIM</b>	153620
<b>UniProt ID</b>	P14174



Tel: 1-631-559-9269 1-516-512-3133

Email: [info@creative-biomart.com](mailto:info@creative-biomart.com) Fax: 1-631-938-8127

45-1 Ramsey Road, Shirley, NY 11967, USA