

Recombinant Human MIF Protein, His-tagged

Cat. No. MIF-2444H Lot. No. (See product label)

SPECIFICATION

| | |
|-------------------------|--|
| Product Overview | Recombinant Human MIF Protein (Met3-Asn111) with a N-His tag was expressed in E. coli. |
| Species | Human |
| Source | E.coli |
| ProteinLength | Met3-Asn111 |
| Description | This gene encodes a lymphokine involved in cell-mediated immunity, immunoregulation, and inflammation. It plays a role in the regulation of macrophage function in host defense through the suppression of anti-inflammatory effects of glucocorticoids. This lymphokine and the JAB1 protein form a complex in the cytosol near the peripheral plasma membrane, which may indicate an additional role in integrin signaling pathways. |
| Form | Freeze-dried powder |
| Molecular Mass | Predicted Molecular Mass: 13.1 kDa Accurate Molecular Mass: 14 kDa |
| Endotoxin | <1.0 EU per 1g (determined by the LAL method). |
| Purity | > 90% |

 Tel: 1-631-559-9269 1-516-512-3133

 Email: info@creative-biomart.com  Fax: 1-631-938-8127

 45-1 Ramsey Road, Shirley, NY 11967, USA

| | |
|-----------------------|--|
| Applications | Cell culture; Activity Assays. |
| Stability | The thermal stability is described by the loss rate. The loss rate was determined by accelerated thermal degradation test, that is, incubate the protein at 37 centigrade for 48h, and no obvious degradation and precipitation were observed. The loss rate is less than 5% within the expiration date under appropriate storage condition. |
| Storage | Avoid repeated freeze/thaw cycles. Store at 2-8 centigrade for one month. Aliquot and store at -80 centigrade for 12 months. |
| Storage Buffer | 20mM Tris, 150mM NaCl, pH8.0, containing 1mM EDTA, 1mM DTT, 0.01% SKL, 5% Trehalose and Proclin300. |
| Reconstitution | Reconstitute in 20mM Tris, 150mM NaCl (PH8.0) to a concentration of 0.1-1.0 mg/mL. Do not vortex. |

GENE INFORMATION

| | |
|------------------------|---|
| Gene Name | MIF macrophage migration inhibitory factor (glycosylation-inhibiting factor) [Homo sapiens (human)] |
| Official Symbol | MIF |
| Synonyms | MIF; macrophage migration inhibitory factor (glycosylation-inhibiting factor); GLIF; macrophage migration inhibitory factor; GIF; L-dopachrome isomerase; L-dopachrome tautomerase; phenylpyruvate tautomerase; MMIF; |
| Gene ID | 4282 |
| mRNA Refseq | NM_002415 |

 Tel: 1-631-559-9269 1-516-512-3133

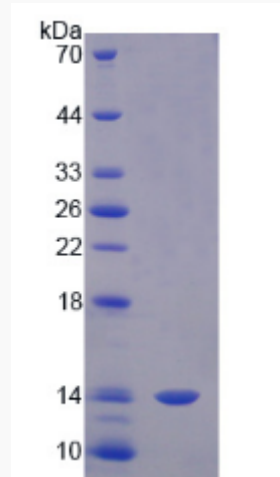
 Email: info@creative-biomart.com  Fax: 1-631-938-8127

 45-1 Ramsey Road, Shirley, NY 11967, USA

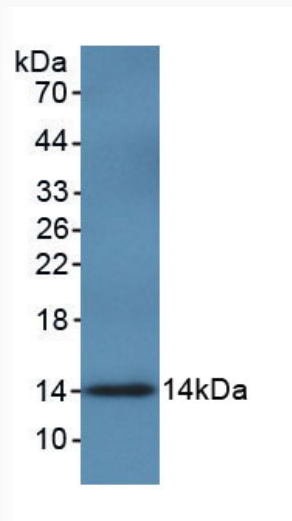
Protein Refseq NP_002406

MIM 153620

UniProt ID P14174



WB

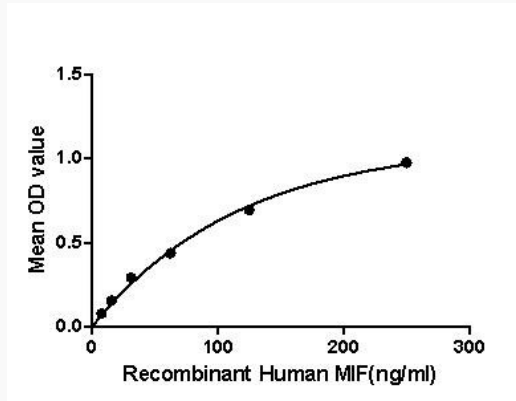


 Tel: 1-631-559-9269 1-516-512-3133

 Email: info@creative-biomart.com  Fax: 1-631-938-8127

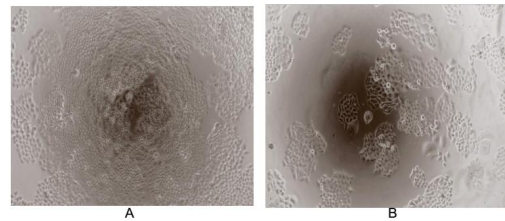
 45-1 Ramsey Road, Shirley, NY 11967, USA

Bioactivity



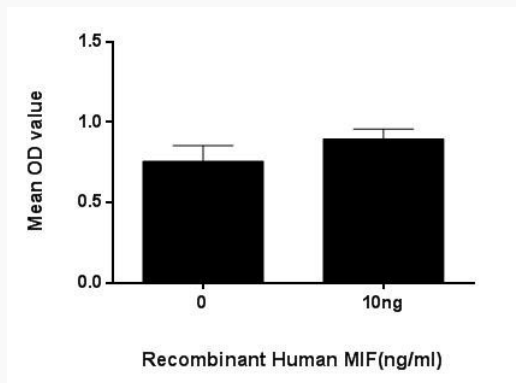
Binding activity


Bioactivity 2




Cell proliferation of MCF-7 cells after stimulated with MIF.

Bioactivity 2




 Tel: 1-631-559-9269 1-516-512-3133

 Email: info@creative-biomart.com  Fax: 1-631-938-8127

 45-1 Ramsey Road, Shirley, NY 11967, USA



Cell proliferation of MCF-7 cells after stimulated with MIF.

 Tel: 1-631-559-9269 1-516-512-3133

 Email: info@creative-biomart.com  Fax: 1-631-938-8127

 45-1 Ramsey Road, Shirley, NY 11967, USA