

## Recombinant Human MIF protein, His-tagged

Cat. No. MIF-3816H Lot. No. (See product label)

### SPECIFICATION

<b>Product Overview</b>	Recombinant Human MIF protein(P14174) (Pro 2-Ala 115) was expressed in HEK293, fused with a polyhistidine tag at the C-terminus and a signal peptide at the N-terminus.
<b>Species</b>	Human
<b>Source</b>	HEK293
<b>ProteinLength</b>	2-115 aa
<b>Form</b>	Lyophilized from sterile PBS, pH 7.4.
<b>Molecular Mass</b>	The recombinant human MIF consists of 125 amino acids and has a predicted molecular mass of 13.8 kDa. In SDS-PAGE under reducing conditions, the apparent molecular mass of rhMIF is approximately 19 kDa due to glycosylation.
<b>Endotoxin</b>	< 1 EU/g as determined by LAL test.
<b>Purity</b>	> 92 % as determined by SDS-PAGE
<b>Storage</b>	Store it under sterile conditions at -20°C to -80°C upon receiving. Recommend to aliquot the protein into smaller quantities for optimal storage. Avoid repeated freeze-thaw cycles.
<b>Reconstitution</b>	It is recommended that sterile water be added to the vial to prepare a stock solution of

 Tel: 1-631-559-9269 1-516-512-3133

 Email: [info@creative-biomart.com](mailto:info@creative-biomart.com)  Fax: 1-631-938-8127

 45-1 Ramsey Road, Shirley, NY 11967, USA

0.2 ug/ul. Centrifuge the vial at 4°C before opening to recover the entire contents.

## GENE INFORMATION

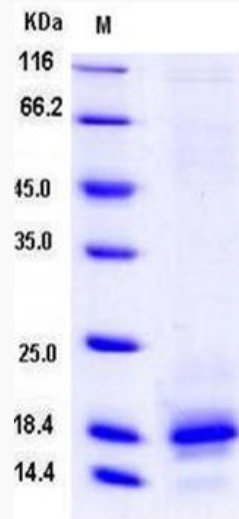
<b>Gene Name</b>	MIF macrophage migration inhibitory factor (glycosylation-inhibiting factor) [ Homo sapiens ]
<b>Official Symbol</b>	MIF
<b>Synonyms</b>	MIF; macrophage migration inhibitory factor (glycosylation-inhibiting factor); GLIF; macrophage migration inhibitory factor; GIF; L-dopachrome isomerase; L-dopachrome tautomerase; phenylpyruvate tautomerase; MMIF;
<b>Gene ID</b>	4282
<b>mRNA Refseq</b>	NM_002415
<b>Protein Refseq</b>	NP_002406
<b>MIM</b>	153620
<b>UniProt ID</b>	P14174

 Tel: 1-631-559-9269 1-516-512-3133

 Email: [info@creative-biomart.com](mailto:info@creative-biomart.com)  Fax: 1-631-938-8127

 45-1 Ramsey Road, Shirley, NY 11967, USA

**SDS-PAGE**



 Tel: 1-631-559-9269 1-516-512-3133

 Email: [info@creative-biomart.com](mailto:info@creative-biomart.com)  Fax: 1-631-938-8127

 45-1 Ramsey Road, Shirley, NY 11967, USA