

Recombinant Human MIF Protein, GST-tagged

Cat. No. MIF-5337H Lot. No. (See product label)

SPECIFICATION

Product Overview	Human MIF full-length ORF (AAH00447.1, 1 a.a. - 115 a.a.) recombinant protein with GST-tag at N-terminal.
Species	Human
Source	Wheat Germ
Description	This gene encodes a lymphokine involved in cell-mediated immunity, immunoregulation, and inflammation. It plays a role in the regulation of macrophage function in host defense through the suppression of anti-inflammatory effects of glucocorticoids. This lymphokine and the JAB1 protein form a complex in the cytosol near the peripheral plasma membrane, which may indicate an additional role in integrin signaling pathways. [provided by RefSeq]
Molecular Mass	38.39 kDa
AA Sequence	MPMFIVNTNVPRASVPDGFSELTQQLAQATGKPPQYIAVHVVPDQLMAFGGSSEP CALCSLHSIGKIGGAQNRYSKLLCGLLAERLRISPDRVYINYYDMNAANVGWNNST FA
Applications	Enzyme-linked Immunoabsorbent Assay Western Blot (Recombinant protein) Antibody Production Protein Array

 Tel: 1-631-559-9269 1-516-512-3133

 Email: info@creative-biomart.com  Fax: 1-631-938-8127

 45-1 Ramsey Road, Shirley, NY 11967, USA

Notes	Best use within three months from the date of receipt of this protein.
Storage	Store at -80 centigrade. Aliquot to avoid repeated freezing and thawing.
Storage Buffer	50 mM Tris-HCl, 10 mM reduced Glutathione, pH=8.0 in the elution buffer.

GENE INFORMATION

Gene Name	MIF macrophage migration inhibitory factor (glycosylation-inhibiting factor) [Homo sapiens]
Official Symbol	MIF
Synonyms	MIF; macrophage migration inhibitory factor (glycosylation-inhibiting factor); GLIF; macrophage migration inhibitory factor; GIF; L-dopachrome isomerase; L-dopachrome tautomerase; phenylpyruvate tautomerase; MMIF;
Gene ID	4282
mRNA Refseq	NM_002415
Protein Refseq	NP_002406
MIM	153620
UniProt ID	P14174

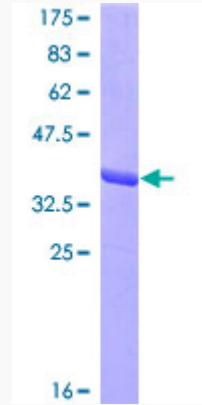
 Tel: 1-631-559-9269 1-516-512-3133

 Email: info@creative-biomart.com  Fax: 1-631-938-8127

 45-1 Ramsey Road, Shirley, NY 11967, USA

Quality Control

Testing:



12.5% SDS-PAGE Stained with Coomassie Blue.

 Tel: 1-631-559-9269 1-516-512-3133

 Email: info@creative-biomart.com  Fax: 1-631-938-8127

 45-1 Ramsey Road, Shirley, NY 11967, USA