

## Recombinant Human MINA Protein, GST-tagged

Cat. No. MINA-5341H Lot. No. (See product label)

### SPECIFICATION

|                         |   |
|-------------------------|---|
| <b>Product Overview</b> | Human MINA full-length ORF ( AAH14928.1, 1 a.a. - 465 a.a.) recombinant protein with GST-tag at N-terminal.   |
| <b>Species</b>          | Human   |
| <b>Source</b>           | Wheat Germ  |
| <b>Description</b>      | MINA is a c-Myc (MYC; MIM 190080) target gene that may play a role in cell proliferation or regulation of cell growth. (Tsuneoka et al., 2002 [PubMed 12091391]; Zhang et al., 2005 [PubMed 15897898]).[supplied by OMIM  |
| <b>Molecular Mass</b>   | 79.2 kDa  |
| <b>AA Sequence</b>      | <p>MPKKAKPTGSGKEEGPAPCKQMKLEAAGGPSALNFDSPSSLFESLISPIKTETFFKE<br/>           FWEQKPLLIQRDDPALATYYGSLFKLTDLKSLSRGMYYGRDVNVCRCVNGKKKVL<br/>           NKDGKAHFLQLRKDFDQKRATIQFHQPQRFKDELWRIQEKLECYFGSLVGSNVYITP<br/>           AGSQGLPPHYDDVEVFILQLEGEKHWRLYHPTVPLAREYSVEAEERIGRPVHEFML<br/>           KPGDLLYFPRGTIHQADTPAGLAHSTHVTISTYQNNSWGDFLLDTISGLVFDTAKEDV<br/>           ELRTGIPRQLLLQVESTTVATRRLSGFLRTLADRLEGTKELLSSDMKKDFIMHRLPPY<br/>           SAGDGAELSTPGGKLPRLDSVRLQFKDHIVLTVLPDQDQSDDETQEKMVYIYHSLKN<br/>           SRETHMMGNEEETFHGLRFPLSHLDALKQIWNSPAISVKDLKLTDEEKESLVLSL<br/>           WTECLIQVV</p> |
| <b>Applications</b>     | Enzyme-linked Immunoabsorbent Assay<br>Western Blot (Recombinant protein)   |

 Tel: 1-631-559-9269 1-516-512-3133

 Email: [info@creative-biomart.com](mailto:info@creative-biomart.com)  Fax: 1-631-938-8127

 45-1 Ramsey Road, Shirley, NY 11967, USA

|                         |   |
|-------------------------|---|
|                         | Antibody Production<br>Protein Array  |
| <b>Notes</b>            | Best use within three months from the date of receipt of this protein.  |
| <b>Storage</b>          | Store at -80 centigrade. Aliquot to avoid repeated freezing and thawing.  |
| <b>Storage Buffer</b>   | 50 mM Tris-HCl, 10 mM reduced Glutathione, pH=8.0 in the elution buffer.  |
| <b>GENE INFORMATION</b> |   |
| <b>Gene Name</b>        | MINA MYC induced nuclear antigen [ Homo sapiens ]   |
| <b>Official Symbol</b>  | MINA  |
| <b>Synonyms</b>         | MINA; MYC induced nuclear antigen; MYC-induced nuclear antigen; FLJ14393; mdig; MINA53; nucleolar protein 52; mineral dust induced gene protein; mineral dust-induced gene protein; myc-induced nuclear antigen, 53 kDa; MDIG; NO52; DKFZp762O1912; |
| <b>Gene ID</b>          | 84864   |
| <b>mRNA Refseq</b>      | NM_001042533  |
| <b>Protein Refseq</b>   | NP_001035998  |
| <b>MIM</b>              | 612049  |
| <b>UniProt ID</b>       | Q8IUF8  |

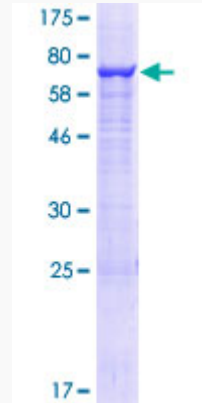
 Tel: 1-631-559-9269 1-516-512-3133

 Email: [info@creative-biomart.com](mailto:info@creative-biomart.com)  Fax: 1-631-938-8127

 45-1 Ramsey Road, Shirley, NY 11967, USA

**Quality Control**

**Testing:**



12.5% SDS-PAGE Stained with Coomassie Blue.

 Tel: 1-631-559-9269 1-516-512-3133

 Email: [info@creative-biomart.com](mailto:info@creative-biomart.com)  Fax: 1-631-938-8127

 45-1 Ramsey Road, Shirley, NY 11967, USA