

# Recombinant Human MINOS1 Protein, Myc/DDK-tagged, C13 and N15-labeled

**Cat. No.** MINOS1-4890H    **Lot. No.** (See product label)

## SPECIFICATION

<b>Product Overview</b>	C1orf151 MS Standard C13 and N15-labeled recombinant protein (NP_001027535) with a C-terminal MYC/DDK tag, was expressed in HEK293 cells.
<b>Species</b>	Human
<b>Source</b>	HEK293
<b>Description</b>	Component of the MICOS complex, a large protein complex of the mitochondrial inner membrane that plays crucial roles in the maintenance of crista junctions, inner membrane architecture, and formation of contact sites to the outer membrane.
<b>Molecular Mass</b>	8.8 kDa
<b>AA Sequence</b>	MSESELGRKWDRCLADAVVKIGTGFGLGIVFSLTFFKRRMWPLAFGSGMGLGMAY SNCQHDFQAPYLLHGKYVKEQEQRTRTRPLEQKLISEEDLAANDILDYKDDDDKV
<b>Purity</b>	> 80% as determined by SDS-PAGE and Coomassie blue staining
<b>Stability</b>	Stable for 3 months from receipt of products under proper storage and handling conditions.
<b>Storage</b>	Store at -80 centigrade. Avoid repeated freeze-thaw cycles.
<b>Concentration</b>	50 µg/mL as determined by BCA

 Tel: 1-631-559-9269    1-516-512-3133

 Email: [info@creative-biomart.com](mailto:info@creative-biomart.com)     Fax: 1-631-938-8127

 45-1 Ramsey Road, Shirley, NY 11967, USA

**Storage Buffer** 100 mM glycine, 25 mM Tris-HCl, pH 7.3.

## GENE INFORMATION

**Gene Name** [MINOS1 mitochondrial inner membrane organizing system 1 \[ Homo sapiens \(human\) \]](#)

**Official Symbol** [MINOS1](#)

**Synonyms** MINOS1; mitochondrial inner membrane organizing system 1; C1orf151, chromosome 1 open reading frame 151; mitochondrial inner membrane organizing system protein 1; FLJ36999; MIO10; RP5 1056L3.2; UPF0327 protein C1orf151; C1orf151; RP5-1056L3.2; FLJ75158;

**Gene ID** [440574](#)

**mRNA Refseq** [NM\\_001032363](#)

**Protein Refseq** [NP\\_001027535](#)

**MIM** [616574](#)

**UniProt ID** [Q5TGZ0](#)

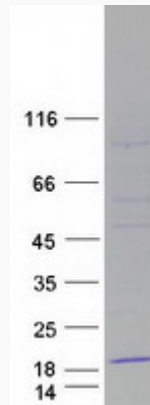
 Tel: 1-631-559-9269 1-516-512-3133

 Email: [info@creative-biomart.com](mailto:info@creative-biomart.com)  Fax: 1-631-938-8127

 45-1 Ramsey Road, Shirley, NY 11967, USA



SDS-PAGE



Tel: 1-631-559-9269 1-516-512-3133

Email: [info@creative-biomart.com](mailto:info@creative-biomart.com) Fax: 1-631-938-8127

45-1 Ramsey Road, Shirley, NY 11967, USA