

Recombinant Human MIS12 Protein, GST-tagged

Cat. No. MIS12-5354H **Lot. No.** (See product label)

SPECIFICATION

Product Overview	Human MIS12 full-length ORF (AAH00229, 1 a.a. - 205 a.a.) recombinant protein with GST-tag at N-terminal.
Species	Human
Source	Wheat Germ
Description	MIS12 (MIS12, Kinetochore Complex Component) is a Protein Coding gene. Among its related pathways are Cell Cycle, Mitotic and Mitotic Prometaphase.
Molecular Mass	48.29 kDa
AA Sequence	MSVDPMTYEAQFFGFTPQTCMLRIYIAFQGYLFEVMQAVEQVILRKLDGIPDCDISPV QIRKCTEKFLCFMKGHFDNLFKMEQLFLQLILRIPSNILLPEDKCKETPYSEEDFQHL QKEIEQLQEKYKTELCTKQALLAELEEQKIVQAKLKQTLTFFDELHNVGRDHGTSDF RESLVSLVQNSRKLQNIIRDNVEKESKRLKIS
Applications	Enzyme-linked Immunoabsorbent Assay Western Blot (Recombinant protein) Antibody Production Protein Array
Notes	Best use within three months from the date of receipt of this protein.
Storage	Store at -80 centigrade. Aliquot to avoid repeated freezing and thawing.

 Tel: 1-631-559-9269 1-516-512-3133

 Email: info@creative-biomart.com  Fax: 1-631-938-8127

 45-1 Ramsey Road, Shirley, NY 11967, USA

Storage Buffer 50 mM Tris-HCl, 10 mM reduced Glutathione, pH=8.0 in the elution buffer.

GENE INFORMATION

Gene Name MIS12 MIS12, MIND kinetochore complex component, homolog (S. pombe) [Homo sapiens]

Official Symbol MIS12

Synonyms MIS12; MIS12, MIND kinetochore complex component, homolog (S. pombe); MIS12, MIND kinetochore complex component, homolog (yeast); protein MIS12 homolog; hMIS12; KNTC2AP; MGC2488; MTW1; MIS12 homolog; homolog of yeast Mis12; hMis12; 2510025F08Rik;

Gene ID 79003

mRNA Refseq NM_001258217

Protein Refseq NP_001245146

MIM 609178

UniProt ID Q9H081

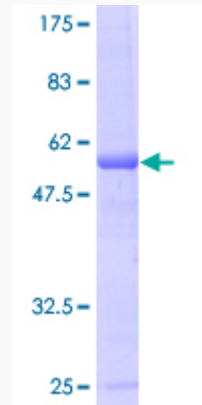
 Tel: 1-631-559-9269 1-516-512-3133

 Email: info@creative-biomart.com  Fax: 1-631-938-8127

 45-1 Ramsey Road, Shirley, NY 11967, USA

Quality Control

Testing:



12.5% SDS-PAGE Stained with Coomassie Blue.

 Tel: 1-631-559-9269 1-516-512-3133

 Email: info@creative-biomart.com  Fax: 1-631-938-8127

 45-1 Ramsey Road, Shirley, NY 11967, USA