

Recombinant Human MIS12 protein, His-tagged

Cat. No. MIS12-7228H **Lot. No.** (See product label)

SPECIFICATION

Product Overview	Recombinant Human MIS12 protein(1-205 aa), fused with N-terminal His tag, was expressed in E.coli.
Species	Human
Source	E.coli
ProteinLength	1-205 aa
Form	The purified protein was Lyophilized from sterile PBS (58mM Na ₂ HPO ₄ , 17mM NaH ₂ PO ₄ , 68mM NaCl, pH7.4). 5 % trehalose and 5 % mannitol are added as protectant before lyophilization. The elution buffer contain 300mM imidazole.
AASequence	MSVDPMTYEAQFFGFTPQTCMLRIYIAFQDYLFVEMQAVEQVILKKLDGIPDCDISPV QIRKCTEKFLCFMKGHFDNLFKMEQLFLQLILRIPSNILLPEDKCKETPYSEEDFQHL QKEIEQLQEKYKTELCTKQALLAELEEQKIVQAKLKQTLTFFDELHNVGRDHGTSDF RESLVSLVQNSRKLQNIIRDNVEKESKRLKIS
Purity	85%, by SDS-PAGE with Coomassie Brilliant Blue staining.
Storage	Store at 2-8°C for 1-2 weeks. Aliquot and store at -20°C to -80°C for up to 3 months, reconstitution with sterile water and addition of an equal volume of glycerol. Avoid repeat freeze-thaw cycles.
Reconstitution	Dissolve the product in 200 µl sterile water to achieve a working concentration of 0.25

 Tel: 1-631-559-9269 1-516-512-3133

 Email: info@creative-biomart.com  Fax: 1-631-938-8127

 45-1 Ramsey Road, Shirley, NY 11967, USA

g/μl. If experimental compatibility allows, mix the aqueous solution with an equal volume of glycerol (1:1 ratio) after initial reconstitution.

GENE INFORMATION

Gene Name	MIS12 MIS12, MIND kinetochore complex component, homolog (S. pombe) [Homo sapiens]
Official Symbol	MIS12
Synonyms	MIS12; MIS12, MIND kinetochore complex component, homolog (S. pombe); MIS12, MIND kinetochore complex component, homolog (yeast); protein MIS12 homolog; hMIS12; KNTC2AP; MGC2488; MTW1; MIS12 homolog; homolog of yeast Mis12; hMis12; 2510025F08Rik;
Gene ID	79003
mRNA Refseq	NM_001258217
Protein Refseq	NP_001245146
MIM	609178
UniProt ID	Q9H081

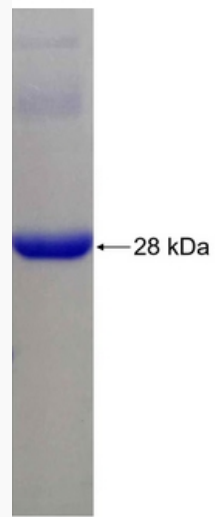
 Tel: 1-631-559-9269 1-516-512-3133

 Email: info@creative-biomart.com  Fax: 1-631-938-8127

 45-1 Ramsey Road, Shirley, NY 11967, USA



SDS-PAGE



Tel: 1-631-559-9269 1-516-512-3133

Email: info@creative-biomart.com Fax: 1-631-938-8127

45-1 Ramsey Road, Shirley, NY 11967, USA