

## Recombinant Human MIS18BP1 Protein, GST-tagged

Cat. No. MIS18BP1-01H Lot. No. (See product label)

### SPECIFICATION

<b>Product Overview</b>	Human C14orf106 full-length ORF ( AAH51885.1, 1 a.a. - 314 a.a.) recombinant protein with GST-tag at N-terminal was expressed in Wheat Germ.
<b>Species</b>	Human
<b>Source</b>	Wheat Germ
<b>Description</b>	Predicted to enable DNA binding activity. Predicted to be involved in cell division. Predicted to be located in nucleoplasm.
<b>Molecular Mass</b>	61.9 kDa
<b>AA Sequence</b>	MIATPLKHSRIYLPPEASSQRRNLPMDAIFFDIPSGLTPVKDLVKYQNSSLKLNHDH KKNQFLKMTTFNKNIFQSTMLTEATTSNSSLDISAIPKNDGLKNKANYESPGKIFL RMKEKVLRLDKQEQPSRNSSLLEPQKSGNNETFTPNRVEKKLQHTYLCEEKNNKS FQSDSSLRASVQGVPLESSNNDIFLPVKQKIQCQKEKKAPLHNLTYELPTLNQEQE NFLAVEARNKTLTRAQLAKQIFHSKESIVATTKSKKDTFVLESVDSADEQFQNTNAET LSTNCIPIKNGSLLMVSDSERTTEGTS
<b>Applications</b>	Enzyme-linked Immunoabsorbent Assay Western Blot (Recombinant protein) Antibody Production Protein Array
<b>Notes</b>	Best use within three months from the date of receipt of this protein.

 Tel: 1-631-559-9269 1-516-512-3133

 Email: [info@creative-biomart.com](mailto:info@creative-biomart.com)  Fax: 1-631-938-8127

 45-1 Ramsey Road, Shirley, NY 11967, USA

**Storage** Store at -80 centigrade. Aliquot to avoid repeated freezing and thawing.

**Storage Buffer** 50 mM Tris-HCl, 10 mM reduced Glutathione, pH=8.0 in the elution buffer.

## GENE INFORMATION

**Gene Name** MIS18BP1 MIS18 binding protein 1 [ Homo sapiens (human) ]

**Official Symbol** MIS18BP1

**Synonyms** MIS18BP1; MIS18 binding protein 1; KNL2; M18BP1; C14orf106; HSA242977; mis18-binding protein 1; P243; hsKNL-2; kinetochore null 2 homolog; kinetochore-associated protein KNL-2 homolog; putative protein p243 which interacts with transcription factor Sp1

**Gene ID** 55320

**mRNA Refseq** NM\_018353

**Protein Refseq** NP\_060823

**MIM** 618139

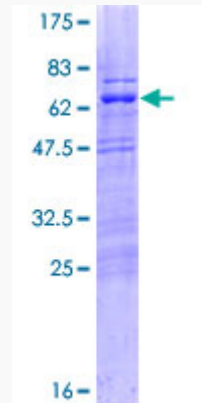
**UniProt ID** Q6P0N0

 Tel: 1-631-559-9269 1-516-512-3133

 Email: [info@creative-biomart.com](mailto:info@creative-biomart.com)  Fax: 1-631-938-8127

 45-1 Ramsey Road, Shirley, NY 11967, USA

**Quality Control  
Testing**



12.5% SDS-PAGE Stained with Coomassie Blue.

 Tel: 1-631-559-9269 1-516-512-3133

 Email: [info@creative-biomart.com](mailto:info@creative-biomart.com)  Fax: 1-631-938-8127

 45-1 Ramsey Road, Shirley, NY 11967, USA