

Recombinant Human MITD1 Protein, Myc/DDK-tagged, C13 and N15-labeled

Cat. No. MITD1-1265H Lot. No. (See product label)

SPECIFICATION

Product Overview	MITD1 MS Standard C13 and N15-labeled recombinant protein (NP_620153) with a C-terminal MYC/DDK tag, was expressed in HEK293 cells.
Species	Human
Source	HEK293
Description	Abscission, the separation of daughter cells at the end of cytokinesis, is effected by endosomal sorting complexes required for transport III (ESCRT-III). The protein encoded by this gene functions as a homodimer, with the N-termini binding to a subset of ESCRT-III subunits and the C-termini binding to membranes. The encoded protein regulates ESCRT-III activity and is required for proper cytokinesis. Several transcript variants encoding different isoforms have been found for this gene.
Molecular Mass	29.3 kDa
AA Sequence	MAKSGLRQDPQSTAAATVLKRAVELDSESRYPQALVCYQEGIDLLLQVLKGTKDNT KRCNLREKISKYMDRAENIKKYLDQEKEDGKYHKQIKIEENATGFSYESLFREYLNET VTEVWIEDPYIRHHTHQLYNFLRFCEMLIKRCKVKTIHLLTSLDEGIEQVQQRGLQEI EESLRSHGVLLEVQYSSSIHDREIRFNNGWMIKIGRGLDYFKKPQSRFSLGYCDFDL RPCHETTVDIFHKKHTKNITRTRPLEQKLISEEDLAANDILDYKDDDDKV
Purity	> 80% as determined by SDS-PAGE and Coomassie blue staining

 Tel: 1-631-559-9269 1-516-512-3133

 Email: info@creative-biomart.com  Fax: 1-631-938-8127

 45-1 Ramsey Road, Shirley, NY 11967, USA

Stability	Stable for 3 months from receipt of products under proper storage and handling conditions.
Storage	Store at -80 centigrade. Avoid repeated freeze-thaw cycles.
Concentration	50 µg/mL as determined by BCA
Storage Buffer	100 mM glycine, 25 mM Tris-HCl, pH 7.3.

GENE INFORMATION

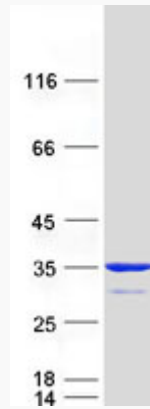
Gene Name	MITD1 microtubule interacting and trafficking domain containing 1 [Homo sapiens (human)]
Official Symbol	MITD1
Synonyms	MITD1; MIT, microtubule interacting and transport, domain containing 1; MIT domain-containing protein 1; LOC129531;
Gene ID	129531
mRNA Refseq	NM_138798
Protein Refseq	NP_620153
UniProt ID	Q8WV92

 Tel: 1-631-559-9269 1-516-512-3133

 Email: info@creative-biomart.com  Fax: 1-631-938-8127

 45-1 Ramsey Road, Shirley, NY 11967, USA

SDS-PAGE



 Tel: 1-631-559-9269 1-516-512-3133

 Email: info@creative-biomart.com  Fax: 1-631-938-8127

 45-1 Ramsey Road, Shirley, NY 11967, USA