

# Recombinant Full Length Human MITD1 Protein, C-Flag-tagged

Cat. No. MITD1-2159HFL Lot. No. (See product label)

## SPECIFICATION

<b>Product Overview</b>	Recombinant Full Length Human MITD1 Protein, fused to Flag-tag at C-terminus, was expressed in Mammalian cells.
<b>Species</b>	Human
<b>Source</b>	Mammalian Cells
<b>Description</b>	Abscission, the separation of daughter cells at the end of cytokinesis, is effected by endosomal sorting complexes required for transport III (ESCRT-III). The protein encoded by this gene functions as a homodimer, with the N-termini binding to a subset of ESCRT-III subunits and the C-termini binding to membranes. The encoded protein regulates ESCRT-III activity and is required for proper cytokinesis. Several transcript variants encoding different isoforms have been found for this gene.
<b>Form</b>	25 mM Tris HCl, pH 7.3, 100 mM glycine, 10% glycerol.
<b>Molecular Mass</b>	29.1 kDa
<b>AA Sequence</b>	MAKSGLRQDPQSTAAATVLKRAVELDSESRYPQALVCYQEGIDLLLQVLKGTKDNT KRCNLREKISKYMD RAENIKKYLDQEKEGDKYHKQIKIEENATGFSYESLFREYLN TVTEVWIEDPYIRHHTHQLYNFLRFCM LIKRPKVKTIHLLTSLDEGIEQVQQSRGLQ EIEESLRSHGVLLEVQYSSSIHDREIRFNNGWMIKIGRG LDYFKKPQSRFSLGYCDF DLRPPCHETTVDIFHKKHTKNI TRTRPLEQKLISEEDLAANDILDYKDDDDKV
<b>Purity</b>	> 80% as determined by SDS-PAGE and Coomassie blue staining.

 Tel: 1-631-559-9269 1-516-512-3133

 Email: [info@creative-biomart.com](mailto:info@creative-biomart.com)  Fax: 1-631-938-8127

 45-1 Ramsey Road, Shirley, NY 11967, USA

<b>Stability</b>	Stable for 12 months from the date of receipt of the product under proper storage and handling conditions. Avoid repeated freeze-thaw cycles.
<b>Storage</b>	Store at -80 centigrade.
<b>Concentration</b>	>50 ug/mL as determined by microplate BCA method.
<b>Preparation</b>	Recombinant protein was captured through anti-DDK affinity column followed by conventional chromatography steps.
<b>Full Length</b>	Full L.

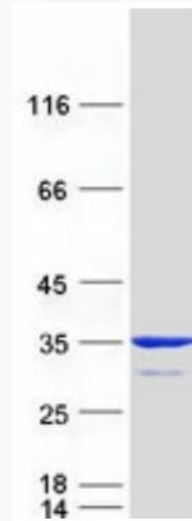
## GENE INFORMATION

<b>Gene Name</b>	MITD1 microtubule interacting and trafficking domain containing 1 [ Homo sapiens (human) ]
<b>Official Symbol</b>	MITD1
<b>Synonyms</b>	domain containing 1; microtubule interacting and transport; MIT
<b>Gene ID</b>	129531
<b>mRNA Refseq</b>	NM_138798.3
<b>Protein Refseq</b>	NP_620153.1
<b>UniProt ID</b>	Q8WV92

 Tel: 1-631-559-9269 1-516-512-3133

 Email: [info@creative-biomart.com](mailto:info@creative-biomart.com)  Fax: 1-631-938-8127

 45-1 Ramsey Road, Shirley, NY 11967, USA



Coomassie blue staining of purified MITD1 protein.

 Tel: 1-631-559-9269 1-516-512-3133

 Email: [info@creative-biomart.com](mailto:info@creative-biomart.com)  Fax: 1-631-938-8127

 45-1 Ramsey Road, Shirley, NY 11967, USA