

Recombinant Human MITF Protein (Met1-Cys520), N-His tagged, Biotinylated

Cat. No. MITF-2446HB Lot. No. (See product label)

SPECIFICATION

Product Overview	Biotinylated recombinant Human MITF Protein (Met1-Cys520) with N-His tag was expressed in E. coli.
Species	Human
Source	E.coli
ProteinLength	Met1-Cys520
Description	The protein encoded by this gene is a transcription factor that contains both basic helix-loop-helix and leucine zipper structural features. The encoded protein regulates melanocyte development and is responsible for pigment cell-specific transcription of the melanogenesis enzyme genes. Heterozygous mutations in the this gene cause auditory-pigmentary syndromes, such as Waardenburg syndrome type 2 and Tietz syndrome.
Form	Solution
Molecular Mass	Predicted Molecular Mass: 61.9 kDa Accurate Molecular Mass: 62 kDa
Endotoxin	< 1.0 EU/μg of the protein by the LAL method.
Purity	> 95%

 Tel: 1-631-559-9269 1-516-512-3133

 Email: info@creative-biomart.com  Fax: 1-631-938-8127

 45-1 Ramsey Road, Shirley, NY 11967, USA

Applications	Positive Control, Immunogen, SDS-PAGE, WB
Stability	The thermal stability is described by the loss rate. The loss rate was determined by accelerated thermal degradation test, that is, incubate the protein at 37 centigrade for 48h, and no obvious degradation and precipitation were observed. The loss rate is less than 5% within the expiration date under appropriate storage condition.
Storage	Avoid repeated freeze/thaw cycles. Aliquot and store below -20 centigrade for 12 months.
Concentration	0.99 mg/mL
Storage Buffer	PBS buffer
Conjugation	Biotin

GENE INFORMATION

Gene Name	MITF microphthalmia-associated transcription factor [Homo sapiens (human)]
Official Symbol	MITF
Synonyms	MITF; microphthalmia-associated transcription factor; Waardenburg syndrome, type 2A, WS2, WS2A; bHLHe32; homolog of mouse microphthalmia; MI; class E basic helix-loop-helix protein 32; WS2; WS2A;
Gene ID	4286
mRNA Refseq	NM_000248
Protein Refseq	NP_000239

 Tel: 1-631-559-9269 1-516-512-3133

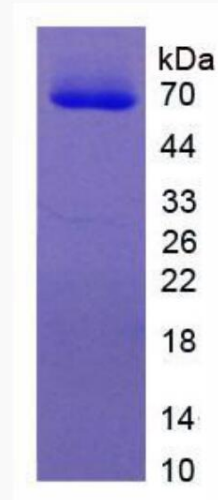
 Email: info@creative-biomart.com  Fax: 1-631-938-8127

 45-1 Ramsey Road, Shirley, NY 11967, USA

MIM 156845

UniProt ID O75030

**SDS-PAGE analysis
of purified protein**



 Tel: 1-631-559-9269 1-516-512-3133

 Email: info@creative-biomart.com  Fax: 1-631-938-8127

 45-1 Ramsey Road, Shirley, NY 11967, USA