

## Recombinant Human MITF Protein, GST-tagged

Cat. No. MITF-5356H Lot. No. (See product label)

### SPECIFICATION

**Product Overview** Human MITF full-length ORF ( NP\_937802.1, 1 a.a. - 520 a.a.) recombinant protein with GST-tag at N-terminal.

**Species** Human

**Source** Wheat Germ

**Description** This gene encodes a transcription factor that contains both basic helix-loop-helix and leucine zipper structural features. It regulates the differentiation and development of melanocytes retinal pigment epithelium and is also responsible for pigment cell-specific transcription of the melanogenesis enzyme genes. Heterozygous mutations in the this gene cause auditory-pigmentary syndromes, such as Waardenburg syndrome type 2 and Tietz syndrome. Alternatively spliced transcript variants encoding different isoforms have been identified. [provided by RefSeq]

**Molecular Mass** 84.6 kDa

**AA Sequence**

```

MQSESGIVPDFEVGEEFHPEPKTYEELKSQPLKSSSSAEHPGASKPPISSSSMTSRI
LLRQQLMREQMQEQERREQQQLQAAQFMQQRVPSQTPAINVSVPTTLPSATQV
PMEVLKVQTHLENPTKYHIQQAQRQVKQYLSTTLANKHANQVLSLPCPNQPGDHV
MPPVPGSSAPNSPMAMLTLSNCEKEGFYKFEEQNRAESECPGMNTHSRSCMQ
MDDVIDDIISLESSYNEEILGLMDPALQMANTLPVSGNLIDLYGNQGLPPPGLTISNSC
PANLPNIKRELTESEARALAKERQKKDNHNLIERRRRFNINDRIKELGTLIPKSNPD
MRWNKGTILKASVDYIRKLQREQQRAKELENRQKKLEHANRHHLLRIQELEMQARA
    
```

 Tel: 1-631-559-9269 1-516-512-3133

 Email: [info@creative-biomart.com](mailto:info@creative-biomart.com)  Fax: 1-631-938-8127

 45-1 Ramsey Road, Shirley, NY 11967, USA

HGLSLIPSTGLCSPDLVNRIIKQEPVLENC SQDLLQHHADLTCTTTLDLTDGTITFNNN  
 LGTGTEANQAYSVP TKMGSKLEDILMDDTLSPVGVTDPLLSSVSPGASKTSSRRSS  
 MSMEETEHTC

<b>Applications</b>	Enzyme-linked Immunoabsorbent Assay Western Blot (Recombinant protein) Antibody Production Protein Array
<b>Notes</b>	Best use within three months from the date of receipt of this protein.
<b>Storage</b>	Store at -80 centigrade. Aliquot to avoid repeated freezing and thawing.
<b>Storage Buffer</b>	50 mM Tris-HCl, 10 mM reduced Glutathione, pH=8.0 in the elution buffer.

## GENE INFORMATION

<b>Gene Name</b>	MITF <a href="#">microphthalmia-associated transcription factor [ Homo sapiens ]</a>
<b>Official Symbol</b>	<a href="#">MITF</a>
<b>Synonyms</b>	MITF; microphthalmia-associated transcription factor; Waardenburg syndrome, type 2A , WS2, WS2A; bHLHe32; homolog of mouse microphthalmia; MI; class E basic helix-loop-helix protein 32; WS2; WS2A;
<b>Gene ID</b>	<a href="#">4286</a>
<b>mRNA Refseq</b>	<a href="#">NM_000248</a>
<b>Protein Refseq</b>	<a href="#">NP_000239</a>

 Tel: 1-631-559-9269 1-516-512-3133

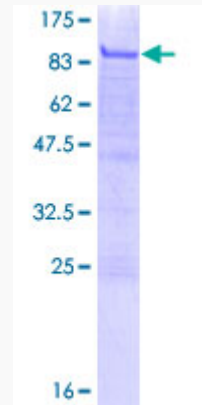
 Email: [info@creative-biomart.com](mailto:info@creative-biomart.com)  Fax: 1-631-938-8127

 45-1 Ramsey Road, Shirley, NY 11967, USA

**MIM** 156845

**UniProt ID** O75030

**Quality Control  
Testing:**



12.5% SDS-PAGE Stained with Coomassie Blue.

 Tel: 1-631-559-9269 1-516-512-3133

 Email: [info@creative-biomart.com](mailto:info@creative-biomart.com)  Fax: 1-631-938-8127

 45-1 Ramsey Road, Shirley, NY 11967, USA