

## Recombinant Human MKI67 Protein, His-tagged

Cat. No. MKI67-1068H Lot. No. (See product label)

### SPECIFICATION

<b>Product Overview</b>	Recombinant Human MKI67 Protein (Thr2720-Ile3256) with His tag was expressed in 293F.
<b>Species</b>	Human
<b>Source</b>	HEK293
<b>ProteinLength</b>	Thr2720-Ile3256
<b>Description</b>	This gene encodes a nuclear protein that is associated with and may be necessary for cellular proliferation. Alternatively spliced transcript variants have been described. A related pseudogene exists on chromosome X.
<b>Form</b>	Freeze-dried powder
<b>Molecular Mass</b>	Predicted Molecular Mass: 60.7 kDa; Accurate Molecular Mass: 61 kDa
<b>Purity</b>	> 90%
<b>Applications</b>	Positive Control; Immunogen; SDS-PAGE; WB.
<b>Stability</b>	The thermal stability is described by the loss rate. The loss rate was determined by accelerated thermal degradation test, that is, incubate the protein at 37 centigrade for 48h, and no obvious degradation and precipitation were observed. The loss rate is less than 5% within the expiration date under appropriate storage condition.

 Tel: 1-631-559-9269 1-516-512-3133

 Email: [info@creative-biomart.com](mailto:info@creative-biomart.com)  Fax: 1-631-938-8127

 45-1 Ramsey Road, Shirley, NY 11967, USA

<b>Storage</b>	Avoid repeated freeze/thaw cycles. Store at 2-8 centigrade for one month. Aliquot and store at -80 centigrade for 12 months.
<b>Storage Buffer</b>	20mM Tris, 150mM NaCl, pH8.0, containing 1mM EDTA, 1mM DTT, 0.01% SKL, 5% Trehalose and Proclin300.
<b>Reconstitution</b>	Reconstitute in 20mM Tris, 150mM NaCl (pH8.0) to a concentration of 0.1-1.0 mg/mL. Do not vortex.

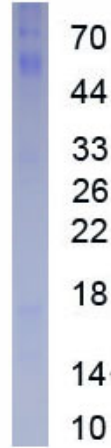
## GENE INFORMATION

<b>Gene Name</b>	MKI67 marker of proliferation Ki-67 [ Homo sapiens (human) ]
<b>Official Symbol</b>	MKI67
<b>Synonyms</b>	MKI67; marker of proliferation Ki-67; KIA; MIB-; MIB-1; PPP1R105; proliferation marker protein Ki-67; Names; Molecular Immunology Borstel antibody 1; antigen Ki67; antigen identified by monoclonal antibody Ki-67; proliferation-related Ki-67 antigen; protein phosphatase 1, regulatory subunit 105
<b>Gene ID</b>	4288
<b>mRNA Refseq</b>	NM_001145966
<b>Protein Refseq</b>	NP_001139438
<b>MIM</b>	176741
<b>UniProt ID</b>	P46013

 Tel: 1-631-559-9269 1-516-512-3133

 Email: [info@creative-biomart.com](mailto:info@creative-biomart.com)  Fax: 1-631-938-8127

 45-1 Ramsey Road, Shirley, NY 11967, USA



Tel: 1-631-559-9269 1-516-512-3133

Email: [info@creative-biomart.com](mailto:info@creative-biomart.com) Fax: 1-631-938-8127

45-1 Ramsey Road, Shirley, NY 11967, USA