

Recombinant Human MKI67 Protein, His-tagged

Cat. No. MKI67-2447H **Lot. No.** (See product label)

SPECIFICATION

Product Overview	Recombinant Human MKI67 Protein (Thr2720-Ile3256) with a N-His tag was expressed in E. coli.
Species	Human
Source	E.coli
ProteinLength	Thr2720-Ile3256
Description	This gene encodes a nuclear protein that is associated with and may be necessary for cellular proliferation. Alternatively spliced transcript variants have been described. A related pseudogene exists on chromosome X.
Form	Freeze-dried powder
Molecular Mass	Predicted Molecular Mass: 64.8 kDa
Endotoxin	<1.0 EU per 1g (determined by the LAL method).
Purity	> 97%
Applications	Positive Control; Immunogen; SDS-PAGE; WB.
Stability	The thermal stability is described by the loss rate. The loss rate was determined by accelerated thermal degradation test, that is, incubate the protein at 37 centigrade for

 Tel: 1-631-559-9269 1-516-512-3133

 Email: info@creative-biomart.com  Fax: 1-631-938-8127

 45-1 Ramsey Road, Shirley, NY 11967, USA

48h, and no obvious degradation and precipitation were observed. The loss rate is less than 5% within the expiration date under appropriate storage condition.

Storage

Avoid repeated freeze/thaw cycles. Store at 2-8 centigrade for one month. Aliquot and store at -80 centigrade for 12 months.

Storage Buffer

PBS, pH7.4, containing 0.01% SKL, 1mM DTT, 5% Trehalose and Proclin300.

Reconstitution

Reconstitute in 20mM Tris, 150mM NaCl (pH8.0) to a concentration of 0.1-1.0 mg/mL. Do not vortex.

GENE INFORMATION

Gene Name

MKI67 antigen identified by monoclonal antibody Ki-67 [Homo sapiens (human)]

Official Symbol

MKI67

Synonyms

MKI67; antigen identified; antigen KI-67; proliferation-related Ki-67 antigen; KIA;

Gene ID

4288

mRNA Refseq

NM_001145966

Protein Refseq

NP_001139438

MIM

176741

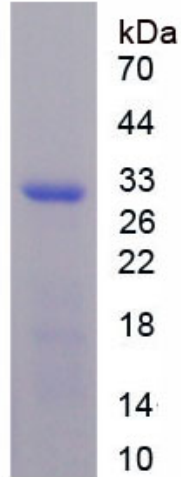
UniProt ID

P46013

 Tel: 1-631-559-9269 1-516-512-3133

 Email: info@creative-biomart.com  Fax: 1-631-938-8127

 45-1 Ramsey Road, Shirley, NY 11967, USA



Tel: 1-631-559-9269 1-516-512-3133

Email: info@creative-biomart.com Fax: 1-631-938-8127

45-1 Ramsey Road, Shirley, NY 11967, USA