

# Recombinant Human MKI67 Protein (Gly3088-Lys3235), N-His tagged

Cat. No. MKI67-2797H Lot. No. (See product label)

## SPECIFICATION

<b>Product Overview</b>	Recombinant human Ki67/MKI67 (Gly3088-Lys3235) protein fused with the N-His tag was expressed in E. coli.
<b>Species</b>	Human
<b>Source</b>	E.coli
<b>ProteinLength</b>	Gly3088-Lys3235
<b>Molecular Mass</b>	18.92 kDa
<b>Purity</b>	>90 % as determined by SDS-PAGE.
<b>Notes</b>	For research use only.
<b>Storage</b>	Use a manual defrost freezer and avoid repeated freeze thaw cycles. Store at 2 to 8 centigrade for one week. Store at -20 to -80 centigrade for twelve months from the date of receipt.
<b>Storage Buffer</b>	0.01M PBS, pH 7.4, 0.02 % NLS
<b>Reconstitution</b>	Reconstitute in sterile water for a stock solution.
<b>Shipping</b>	In general, proteins are provided as lyophilized powder/frozen liquid. They are

 Tel: 1-631-559-9269 1-516-512-3133

 Email: [info@creative-biomart.com](mailto:info@creative-biomart.com)  Fax: 1-631-938-8127

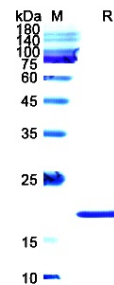
 45-1 Ramsey Road, Shirley, NY 11967, USA

shipped out with dry ice/blue ice unless customers require otherwise.

## GENE INFORMATION

<b>Gene Name</b>	MKI67 antigen identified by monoclonal antibody Ki-67 [ Homo sapiens (human) ]
<b>Official Symbol</b>	MKI67
<b>Synonyms</b>	MKI67; antigen identified; antigen KI-67; proliferation-related Ki-67 antigen; KIA;
<b>Gene ID</b>	4288
<b>mRNA Refseq</b>	NM_001145966
<b>Protein Refseq</b>	NP_001139438
<b>MIM</b>	176741
<b>UniProt ID</b>	P46013

## SDS-PAGE



Tel: 1-631-559-9269 1-516-512-3133

Email: [info@creative-biomart.com](mailto:info@creative-biomart.com) Fax: 1-631-938-8127

45-1 Ramsey Road, Shirley, NY 11967, USA