

Recombinant Human MKLN1 Protein, GST-tagged

Cat. No. MKLN1-5364H Lot. No. (See product label)

SPECIFICATION

Product Overview	Human MKLN1 partial ORF (NP_037387, 633 a.a. - 735 a.a.) recombinant protein with GST-tag at N-terminal.
Species	Human
Source	Wheat Germ
Description	Muskelin is an intracellular protein that acts as a mediator of cell spreading and cytoskeletal responses to the extracellular matrix component thrombospondin I (MIM 188060) (Adams et al., 1998 [PubMed 9724633]).[supplied by OMIM
Molecular Mass	37.07 kDa
AA Sequence	RHCKYLIRKHRFEEKAQVDPLSALKYLQNDLYITVDHSDPEETKEFQLLASALFKSGS DFTALGFSDVDHTYAQRTQLFDTLVNFFPDSMTPPKGNLVDLITL
Applications	Enzyme-linked Immunoabsorbent Assay Western Blot (Recombinant protein) Antibody Production Protein Array
Notes	Best use within three months from the date of receipt of this protein.
Storage	Store at -80 centigrade. Aliquot to avoid repeated freezing and thawing.

 Tel: 1-631-559-9269 1-516-512-3133

 Email: info@creative-biomart.com  Fax: 1-631-938-8127

 45-1 Ramsey Road, Shirley, NY 11967, USA

Storage Buffer 50 mM Tris-HCl, 10 mM reduced Glutathione, pH=8.0 in the elution buffer.

GENE INFORMATION

Gene Name MKLN1 muskelin 1, intracellular mediator containing kelch motifs [Homo sapiens]

Official Symbol MKLN1

Synonyms MKLN1; muskelin 1, intracellular mediator containing kelch motifs; muskelin; TWA2; FLJ11162;

Gene ID 4289

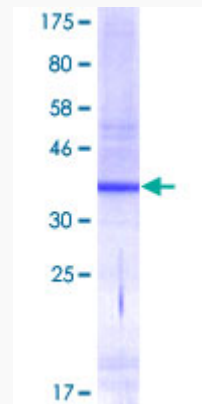
mRNA Refseq NM_001145354

Protein Refseq NP_001138826

MIM 605623

UniProt ID Q9UL63

Quality Control Testing:



 Tel: 1-631-559-9269 1-516-512-3133

 Email: info@creative-biomart.com  Fax: 1-631-938-8127

 45-1 Ramsey Road, Shirley, NY 11967, USA



12.5% SDS-PAGE Stained with Coomassie Blue.

 Tel: 1-631-559-9269 1-516-512-3133

 Email: info@creative-biomart.com  Fax: 1-631-938-8127

 45-1 Ramsey Road, Shirley, NY 11967, USA