

Active Recombinant Human MKNK1 Protein, GST-tagged

Cat. No. MKNK1-5365H Lot. No. (See product label)

SPECIFICATION

Product Overview	Human MKNK1 (BAA19885.1, 1 a.a. - 424 a.a.) full-length recombinant protein with GST tag expressed in baculovirus infected Sf21 cells.
Species	Human
Source	Insect Cells
Description	<p>This gene encodes a Ser/Thr protein kinase that interacts with, and is activated by ERK1 and p38 mitogen-activated protein kinases, and thus may play a role in the response to environmental stress and cytokines. This kinase may also regulate transcription by phosphorylating eIF4E via interaction with the C-terminal region of eIF4G. Alternatively spliced transcript variants have been noted for this gene. [provided by RefSeq, Jan 2012]</p>
Form	Liquid
Bio-activity	<p>The activity was measured by off-chip mobility shift assay. The enzyme was incubated with fluorescence-labeled substrate and Mg(or Mn)/ATP. The phosphorylated and unphosphorylated substrates were separated and detected by LabChip 3000.</p> <p>Substrate:RS peptide.</p> <p>ATP: 100 µM.</p>
Molecular Mass	74 kDa

 Tel: 1-631-559-9269 1-516-512-3133

 Email: info@creative-biomart.com  Fax: 1-631-938-8127

 45-1 Ramsey Road, Shirley, NY 11967, USA

Purity	93 % by SDS-PAGE/CBB staining
Applications	Functional Study SDS-PAGE
Storage	Store at -80 centigrade. Aliquot to avoid repeated freezing and thawing.
Storage Buffer	In 50 mM Tris-HCl, 150 mM NaCl, pH 7.5 (0.05% Brij35, 1 mM DTT, 10% glycerol)

GENE INFORMATION

Gene Name	MKNK1 MAP kinase interacting serine/threonine kinase 1 [Homo sapiens]
Official Symbol	MKNK1
Synonyms	MKNK1; MAP kinase interacting serine/threonine kinase 1; MAP kinase-interacting serine/threonine-protein kinase 1; MNK1; MAPK signal-integrating kinase 1; MAP kinase signal-integrating kinase 1;
Gene ID	8569
mRNA Refseq	NM_001135553
Protein Refseq	NP_001129025
MIM	606724
UniProt ID	Q9BUB5

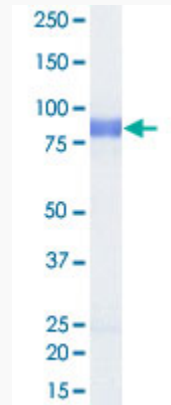
 Tel: 1-631-559-9269 1-516-512-3133

 Email: info@creative-biomart.com  Fax: 1-631-938-8127

 45-1 Ramsey Road, Shirley, NY 11967, USA

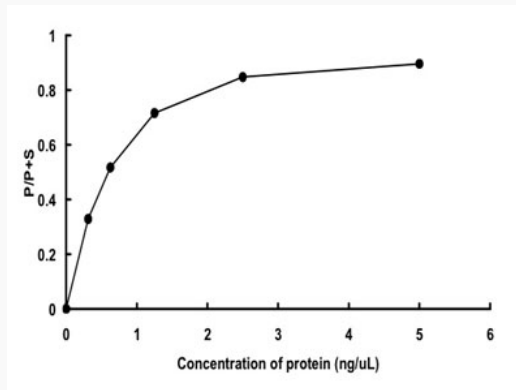
Quality Control

Testing:



Loading 1 μ g protein in SDS-PAGE

Result of activity analysis



 Tel: 1-631-559-9269 1-516-512-3133

 Email: info@creative-biomart.com  Fax: 1-631-938-8127

 45-1 Ramsey Road, Shirley, NY 11967, USA