

Recombinant Human MKNK1 Protein, GST-tagged

Cat. No. MKNK1-5366H Lot. No. (See product label)

SPECIFICATION

Product Overview	Human MKNK1 full-length ORF (AAH02755.1, 1 a.a. - 465 a.a.) recombinant protein with GST-tag at N-terminal.
Species	Human
Source	Wheat Germ
Description	This gene encodes a Ser/Thr protein kinase that interacts with, and is activated by ERK1 and p38 mitogen-activated protein kinases, and thus may play a role in the response to environmental stress and cytokines. This kinase may also regulate transcription by phosphorylating eIF4E via interaction with the C-terminal region of eIF4G. Alternatively spliced transcript variants have been noted for this gene. [provided by RefSeq, Jan 2012]
Molecular Mass	76.89 kDa
AA Sequence	MVSSQKLEKPIEMGSSEPLPIADGDRRRKKRRGRATDSLPGKFEDMYKLTSELLG EGAYAKVQGA VSLQNGKEYAVKIIKQAGHSRSRVFREVETLYQCQRNKNILELIEFF EDDTRFYLVFEKLQGG SILAHIKQKHFNEREASRVVRGVAAALDFLHTKDKVSLCH LGWSAMAPSGLTAAPTSLGSSDPPTSASQVAGTTGIAHRDLKPENILCESPEKVSPV KICDFDLGSGMKLNNSCTPITPELTPCGSAEYMAPEVVEVFTDQATFYDKRCDLW SLGVVLYIMLSGYPPFVGHCGADCGWDRGEVCRVCQNKL FESI QEGKYEFDPKDW AHISSEAKDLISKLLVRDAKQRLSAAQVLQHPWVQGAPEKGLPTPQVLQRNSSTM DLTLFAAEAIALNRLLSQHEENELAEPEALADGLCSMKLSPPCKSRLARRRALAQA

Tel: 1-631-559-9269 1-516-512-3133

Email: info@creative-biomart.com Fax: 1-631-938-8127

45-1 Ramsey Road, Shirley, NY 11967, USA

GRGEDRSPPTAL

Applications

Enzyme-linked Immunoabsorbent Assay
 Western Blot (Recombinant protein)
 Antibody Production
 Protein Array

Notes

Best use within three months from the date of receipt of this protein.

Storage

Store at -80 centigrade. Aliquot to avoid repeated freezing and thawing.

Storage Buffer

50 mM Tris-HCl, 10 mM reduced Glutathione, pH=8.0 in the elution buffer.

GENE INFORMATION

Gene Name

[MKNK1 MAP kinase interacting serine/threonine kinase 1 \[Homo sapiens \]](#)

Official Symbol

[MKNK1](#)

Synonyms

MKNK1; MAP kinase interacting serine/threonine kinase 1; MAP kinase-interacting serine/threonine-protein kinase 1; MNK1; MAPK signal-integrating kinase 1; MAP kinase signal-integrating kinase 1;

Gene ID

[8569](#)

mRNA Refseq

[NM_001135553](#)

Protein Refseq

[NP_001129025](#)

MIM

[606724](#)

 Tel: 1-631-559-9269 1-516-512-3133

 Email: info@creative-biomart.com  Fax: 1-631-938-8127

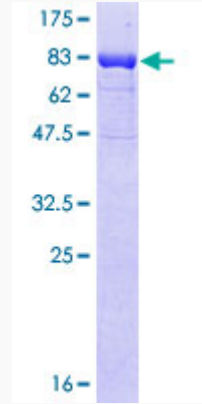
 45-1 Ramsey Road, Shirley, NY 11967, USA

UniProt ID

Q9BUB5

Quality Control

Testing:



12.5% SDS-PAGE Stained with Coomassie Blue.

 Tel: 1-631-559-9269 1-516-512-3133

 Email: info@creative-biomart.com  Fax: 1-631-938-8127

 45-1 Ramsey Road, Shirley, NY 11967, USA