

Recombinant Human MKRN2 Protein, GST-tagged

Cat. No. MKRN2-5374H Lot. No. (See product label)

SPECIFICATION

Product Overview	Human MKRN2 full-length ORF (NP_054879.3, 1 a.a. - 416 a.a.) recombinant protein with GST-tag at N-terminal.
Species	Human
Source	Wheat Germ
Description	Members of the makorin family, including MKRN2, have a characteristic zinc finger composition that suggests that they are ribonucleoproteins (Gray et al., 2001 [PubMed 11597136]).[supplied by OMIM]
Molecular Mass	73.3 kDa
AA Sequence	MSTKQITCRYFMHGVCREGSQCLFSHDLANSKPSTICKYYQKGYCAYGTRCRYDHT RPSAAAGGAVGTMAHSVPSPAFHSPHPPSEVTASIVKTNSHEPGKREKRTLVLDR NLSGMAERKTQPSMVSNP GSCSDPQPSPMKPHSYLDAIRGLDDVEASSYSNE QQLCPYAAAGECRFGDACVYLHGEVCEICRLQVLHHPFDPEQRKAHEKICMLTFEHE MEKAFQASQDKVCSICMEVILEKASASERRFGILSNCNHTYCLSCIRQWRCAKQF ENPIIKSCPECRVISEFVIPSVYWVEDQNKKNELIEAFKQGMGKKACKYFEQKGTG PFGSKCLYRHAYPDGRLAEPEKPRKQLSSQGTVRFFNSVRLWDFIENRESRHVPNN EDVDMTELGDLFMHLSGVESSEP
Applications	Antibody Production Functional Study Compound Screening

 Tel: 1-631-559-9269 1-516-512-3133

 Email: info@creative-biomart.com  Fax: 1-631-938-8127

 45-1 Ramsey Road, Shirley, NY 11967, USA

Notes	Best use within three months from the date of receipt of this protein.
Storage	Store at -80 centigrade. Aliquot to avoid repeated freezing and thawing.
Storage Buffer	50 mM Tris-HCl, 10 mM reduced Glutathione, pH=8.0 in the elution buffer.

GENE INFORMATION

Gene Name	MKRN2 makorin ring finger protein 2 [Homo sapiens]
Official Symbol	MKRN2
Synonyms	MKRN2; makorin ring finger protein 2; probable E3 ubiquitin-protein ligase makorin-2; HSPC070; RNF62; RING finger protein 62;
Gene ID	23609
mRNA Refseq	NM_014160
Protein Refseq	NP_054879
MIM	608426
UniProt ID	Q9H000

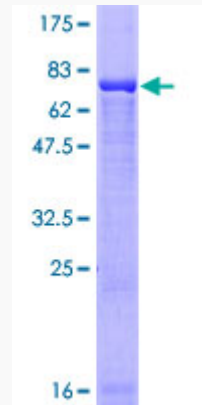
 Tel: 1-631-559-9269 1-516-512-3133

 Email: info@creative-biomart.com  Fax: 1-631-938-8127

 45-1 Ramsey Road, Shirley, NY 11967, USA

Quality Control

Testing:



12.5% SDS-PAGE Stained with Coomassie Blue.

 Tel: 1-631-559-9269 1-516-512-3133

 Email: info@creative-biomart.com  Fax: 1-631-938-8127

 45-1 Ramsey Road, Shirley, NY 11967, USA