

Recombinant Human MLANA Protein, His-B2M-tagged

Cat. No. MLANA-1282H Lot. No. (See product label)

SPECIFICATION

Product Overview	Recombinant Human MLANA Protein (1-118aa) was expressed in E. coli with N-terminal His-B2M tag.
Species	Human
Source	E.coli
ProteinLength	1-118 a.a.
Form	Tris-based buffer, 50% glycerol.
Molecular Mass	27.2 kDa
AA Sequence	MPREDAHFIYGYPKKGHGHSYTTAEEAAGIGILTVILGVLLIGCWYCRRRNGYRALM DKSLHVGTQCAL TRRCPQEGFDHRDSK/SLQEKNCEPVVPNAPPAYEKLSAEQSPPPYSP
Purity	Greater than 90% as determined by SDS-PAGE.
Storage	The shelf life of liquid form is 6 months at -20 centigrade/-80 centigrade. The shelf life of lyophilized form is 12 months at -20 centigrade/-80 centigrade.

GENE INFORMATION

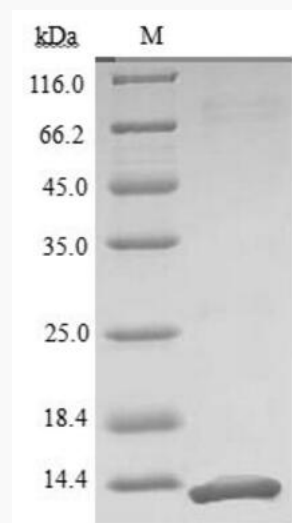
Gene Name MLANA melan-A [Homo sapiens]

 Tel: 1-631-559-9269 1-516-512-3133

 Email: info@creative-biomart.com  Fax: 1-631-938-8127

 45-1 Ramsey Road, Shirley, NY 11967, USA

Official Symbol	MLANA
Synonyms	MLANA; melan-A; melanoma antigen recognized by T-cells 1; MART1; antigen LB39-AA; antigen SK29-AA; protein Melan-A; MART-1
Gene ID	2315
mRNA Refseq	NM_005511
Protein Refseq	NP_005502
MIM	605513
UniProt ID	Q16655



Tel: 1-631-559-9269 1-516-512-3133

Email: info@creative-biomart.com Fax: 1-631-938-8127

45-1 Ramsey Road, Shirley, NY 11967, USA