

Recombinant Human MLANA Protein (1-118 aa), His-tagged

Cat. No. MLANA-1658H Lot. No. (See product label)

SPECIFICATION

| | |
|-------------------------|---|
| Product Overview | Recombinant Human MLANA Protein (1-118 aa) is produced by Yeast expression system. This protein is fused with a 6xHis tag at the N-terminal. Research Area: Cancer. Protein Description: Full Length. |
| Species | Human |
| Source | Yeast |
| ProteinLength | 1-118 aa |
| Description | Involved in melanosome biogenesis by ensuring the stability of GPR143. Plays a vital role in the expression, stability, trafficking, and processing of melanocyte protein PMEL, which is critical to the formation of stage II melanosomes. |
| Form | Tris-based buffer,50% glycerol |
| Molecular Mass | 15.2 kDa |
| AA Sequence | MPREDAHFYGYPKKGGHGHSYTTAEEAAGIGILTVILGVLLIGCWYCRRRNGYRALM DKSLHVGTTQCALTRRCPQEGFDHRDSKVSLEKNCPEVVPNAPPAYEKLSAEQSP PPYSP |
| Purity | > 90% as determined by SDS-PAGE. |
| Notes | Repeated freezing and thawing is not recommended. Store working aliquots at 4 |

 Tel: 1-631-559-9269 1-516-512-3133

 Email: info@creative-biomart.com  Fax: 1-631-938-8127

 45-1 Ramsey Road, Shirley, NY 11967, USA

centigrade for up to one week.

Storage

The shelf life is related to many factors, storage state, buffer ingredients, storage temperature and the stability of the protein itself. Generally, the shelf life of liquid form is 6 months at -20 centigrade/-80 centigrade. The shelf life of lyophilized form is 12 months at -20 centigrade/-80 centigrade.

Concentration

A hardcopy of COA with reconstitution instruction is sent along with the products.

GENE INFORMATION

Gene Name

MLANA melan-A [Homo sapiens]

Official Symbol

MLANA

Synonyms

MLANA; melan-A; MART1; antigen LB39-AA; MART-1;

Gene ID

2315

mRNA Refseq

NM_005511

Protein Refseq

NP_005502

MIM

605513

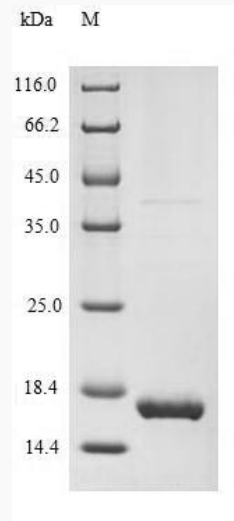
UniProt ID

Q16655

 Tel: 1-631-559-9269 1-516-512-3133

 Email: info@creative-biomart.com  Fax: 1-631-938-8127

 45-1 Ramsey Road, Shirley, NY 11967, USA



(Tris-Glycine gel) Discontinuous SDS-PAGE (reduced) with 5% enrichment gel and 15% separation gel.

 Tel: 1-631-559-9269 1-516-512-3133

 Email: info@creative-biomart.com  Fax: 1-631-938-8127

 45-1 Ramsey Road, Shirley, NY 11967, USA