

Recombinant Human MLANA Protein, Myc/DDK-tagged, C13 and N15-labeled

Cat. No. MLANA-4686H Lot. No. (See product label)

SPECIFICATION

Product Overview	MLANA MS Standard C13 and N15-labeled recombinant protein (NP_005502) with a C-terminal MYC/DDK tag, was expressed in HEK293 cells.
Species	Human
Source	HEK293
Description	Involved in melanosome biogenesis by ensuring the stability of GPR143. Plays a vital role in the expression, stability, trafficking, and processing of melanocyte protein PMEL, which is critical to the formation of stage II melanosomes.
Molecular Mass	13.2 kDa
AA Sequence	MPREDAHFYGYPKKGGHGHSYTTAEEAAGIGILTVILGVLLIGCWYCRRRNGYRALM DKSLHVGVTQCALTRRCPQEGFDHRDSKVSLEKNCPEVVPNAPPAYEKLSAEQSP PPYSPTRTRPLEQKLISEEDLAANDILDYKDDDDKV
Purity	> 80% as determined by SDS-PAGE and Coomassie blue staining
Stability	Stable for 3 months from receipt of products under proper storage and handling conditions.
Storage	Store at -80 centigrade. Avoid repeated freeze-thaw cycles.

 Tel: 1-631-559-9269 1-516-512-3133

 Email: info@creative-biomart.com  Fax: 1-631-938-8127

 45-1 Ramsey Road, Shirley, NY 11967, USA

Concentration 50 µg/mL as determined by BCA

Storage Buffer 100 mM glycine, 25 mM Tris-HCl, pH 7.3.

GENE INFORMATION

Gene Name [MLANA melan-A \[Homo sapiens \(human\) \]](#)

Official Symbol [MLANA](#)

Synonyms MLANA; melan-A; melanoma antigen recognized by T-cells 1; MART1; antigen LB39-AA; antigen SK29-AA; protein Melan-A; MART-1;


Gene ID [2315](#)

mRNA Refseq [NM_005511](#)

Protein Refseq [NP_005502](#)

MIM [605513](#)

UniProt ID [Q16655](#)

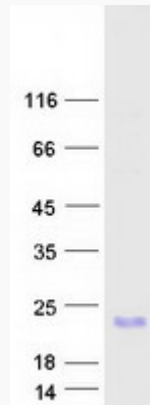
 Tel: 1-631-559-9269 1-516-512-3133

 Email: info@creative-biomart.com  Fax: 1-631-938-8127

 45-1 Ramsey Road, Shirley, NY 11967, USA



SDS-PAGE



Tel: 1-631-559-9269 1-516-512-3133

Email: info@creative-biomart.com Fax: 1-631-938-8127

45-1 Ramsey Road, Shirley, NY 11967, USA