

Recombinant Human MLF1IP Protein, GST-tagged

Cat. No. MLF1IP-5383H Lot. No. (See product label)

SPECIFICATION

Product Overview	Human MLF1IP full-length ORF (AAH31520, 1 a.a. - 176 a.a.) recombinant protein with GST-tag at N-terminal.
Species	Human
Source	Wheat Germ
Description	The centromere is a specialized chromatin domain, present throughout the cell cycle, that acts as a platform on which the transient assembly of the kinetochore occurs during mitosis. All active centromeres are characterized by the presence of long arrays of nucleosomes in which CENPA (MIM 117139) replaces histone H3 (see MIM 601128). MLF1IP, or CENPU, is an additional factor required for centromere assembly (Foltz et al., 2006 [PubMed 16622419]).[supplied by OMIM
Molecular Mass	45.1 kDa
AA Sequence	MKTSDIKELNIVLPEFEKTHLEHQQRIESKVCKAAIATFYVNVKEQFIKMLKESQMLTN LKRKNAKMISDIEKKRQRMIEVQDELLRLEPQLKQLQTKYDELKERKSSLRNAAYFLS NLKQLYQDYSDVQAQEPNVKETYDSSSLPALLFKARTLLGAESHLRNINHQLEKLLD QG
Applications	Antibody Production Functional Study Compound Screening

 Tel: 1-631-559-9269 1-516-512-3133

 Email: info@creative-biomart.com  Fax: 1-631-938-8127

 45-1 Ramsey Road, Shirley, NY 11967, USA

Notes	Best use within three months from the date of receipt of this protein.
Storage	Store at -80 centigrade. Aliquot to avoid repeated freezing and thawing.
Storage Buffer	50 mM Tris-HCl, 10 mM reduced Glutathione, pH=8.0 in the elution buffer.

GENE INFORMATION

Gene Name	MLF1IP MLF1 interacting protein [Homo sapiens]
Official Symbol	MLF1IP
Synonyms	CENPU; KLIP1; PBIP1; CENP50; CENPU50
Gene ID	79682
mRNA Refseq	NM_024629
Protein Refseq	NP_078905
MIM	611511
UniProt ID	Q71F23

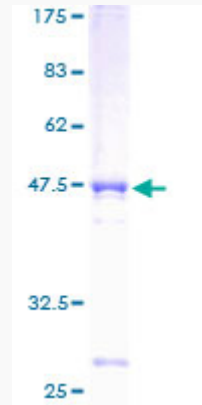
 Tel: 1-631-559-9269 1-516-512-3133

 Email: info@creative-biomart.com  Fax: 1-631-938-8127

 45-1 Ramsey Road, Shirley, NY 11967, USA

Quality Control

Testing:



12.5% SDS-PAGE Stained with Coomassie Blue.

 Tel: 1-631-559-9269 1-516-512-3133

 Email: info@creative-biomart.com  Fax: 1-631-938-8127

 45-1 Ramsey Road, Shirley, NY 11967, USA