

Recombinant Human MLF1IP protein, His-tagged

Cat. No. MLF1IP-7877H Lot. No. (See product label)

SPECIFICATION

Product Overview	Recombinant Human MLF1IP protein(243-418 aa), fused with N-terminal His tag, was expressed in E. coli.
Species	Human
Source	E. coli
ProteinLength	243-418 aa
Form	The purified protein was lyophilized from sterile phosphate-buffered saline (PBS: 58 mM Na ₂ HPO ₄ , 17 mM NaH ₂ PO ₄ , 68 mM NaCl, pH 7.4). Prior to lyophilization, 5% (w/v) trehalose and 5% (w/v) mannitol were incorporated as cryoprotective excipients. The protein was eluted with a buffer containing 300 mM imidazole.
AASequence	MKTSDIKELNIVLPEFEKTHLEHQQRIESKVCKAAIATFYVNVKEQFIKMLKESQMLTN LKRKNAKMISDIEKKRQRMIEVQDELLRLEPQLKQLQTKYDELKERKSSLRNAAYFLS NLKQLYQDYSDVQAQEPNVKETYDSSSLPALLFKARTLLGAESHLRNINHQLEKLLD QG
Purity	85%, by SDS-PAGE.
Storage	Store at 2-8°C for 1-2 weeks. Aliquot and store at -20°C to -80°C for up to 3 months, reconstitution with sterile water and addition of an equal volume of glycerol. Avoid repeat freeze-thaw cycles.

 Tel: 1-631-559-9269 1-516-512-3133

 Email: info@creative-biomart.com  Fax: 1-631-938-8127

 45-1 Ramsey Road, Shirley, NY 11967, USA

Reconstitution It is recommended that sterile water be added to the vial to prepare a stock solution of 0.25 ug/ul. Centrifuge the vial at 4°C before opening to recover the entire contents.

GENE INFORMATION

Gene Name MLF1IP MLF1 interacting protein [Homo sapiens]

Official Symbol MLF1IP

Synonyms CENPU; KLIP1; PBIP1; CENP50; CENPU50

mRNA Refseq [NM_024629.3](#)

Protein Refseq [NP_078905.2](#)

MIM 611511

UniProt ID [Q71F23](#)

Gene ID [79682](#)

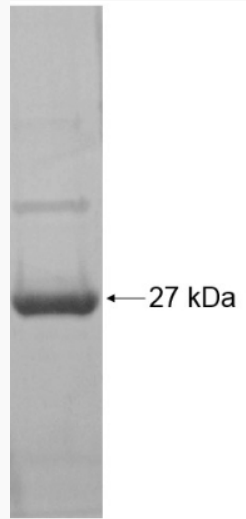
 Tel: 1-631-559-9269 1-516-512-3133

 Email: info@creative-biomart.com  Fax: 1-631-938-8127

 45-1 Ramsey Road, Shirley, NY 11967, USA



SDS-PAGE



☎ Tel: 1-631-559-9269 1-516-512-3133

☎ Email: info@creative-biomart.com ☎ Fax: 1-631-938-8127

☎ 45-1 Ramsey Road, Shirley, NY 11967, USA