

Recombinant Human MLH1 protein, His-tagged

Cat. No. MLH1-1291H Lot. No. (See product label)

SPECIFICATION

Product Overview	Recombinant Human MLH1 protein(Ser486~Lys751), fused with N-terminal His Tag, was expressed in E.coli.
Species	Human
Source	E.coli
ProteinLength	Ser486~Lys751
Form	20mM Tris, 150mM NaCl, pH8.0, containing 1mM EDTA, 1mM DTT, 0.01% SKL, 5% Trehalose and Proclin300.
Molecular Mass	35kDa
Endotoxin	<1.0EU per 1g (determined by the LAL method)
Purity	> 90%
Storage	Avoid repeated freeze/thaw cycles. Store at 2-8°C for one month. Aliquot and store at -80°C for 12 months.
Reconstitution	Reconstitute in 20mM Tris, 150mM NaCl (pH8.0) to a concentration of 0.1-1.0 mg/mL. Do not vortex.

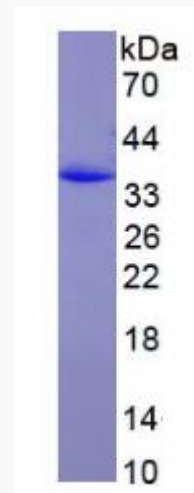
GENE INFORMATION

 Tel: 1-631-559-9269 1-516-512-3133

 Email: info@creative-biomart.com  Fax: 1-631-938-8127

 45-1 Ramsey Road, Shirley, NY 11967, USA

Gene Name	MLH1 mutL homolog 1, colon cancer, nonpolyposis type 2 (E. coli) [Homo sapiens]
Official Symbol	MLH1
Synonyms	MLH1; mutL homolog 1, colon cancer, nonpolyposis type 2 (E. coli); COCA2, mutL (E. coli) homolog 1 (colon cancer, nonpolyposis type 2); DNA mismatch repair protein Mlh1; FCC2; HNPCC; HNPCC2; COCA2; hMLH1; MGC5172;
Gene ID	4292
mRNA Refseq	NM_000249
Protein Refseq	NP_000240
MIM	120436
UniProt ID	P40692

SDS-PAGE


 Tel: 1-631-559-9269 1-516-512-3133

 Email: info@creative-biomart.com  Fax: 1-631-938-8127

 45-1 Ramsey Road, Shirley, NY 11967, USA