

Recombinant Full Length Human MLH1 Protein, GST&His tagged

Cat. No. MLH1-12HFL Lot. No. (See product label)

SPECIFICATION

Product Overview	Purified recombinant protein of Human mutL homolog 1, colon cancer, nonpolyposis type 2 (E. coli) (MLH1), transcript variant 1 with N-GST and C-His was expressed in E. coli.
Species	Human
Source	E. coli
ProteinLength	1-756 aa
Description	The protein encoded by this gene can heterodimerize with mismatch repair endonuclease PMS2 to form MutL alpha, part of the DNA mismatch repair system. When MutL alpha is bound by MutS beta and some accessory proteins, the PMS2 subunit of MutL alpha introduces a single-strand break near DNA mismatches, providing an entry point for exonuclease degradation. The encoded protein is also involved in DNA damage signaling and can heterodimerize with DNA mismatch repair protein MLH3 to form MutL gamma, which is involved in meiosis. This gene was identified as a locus frequently mutated in hereditary nonpolyposis colon cancer (HNPCC).
Molecular Mass	84.6 kDa
Purity	> 80% as determined by SDS-PAGE and Coomassie blue staining

 Tel: 1-631-559-9269 1-516-512-3133

 Email: info@creative-biomart.com  Fax: 1-631-938-8127

 45-1 Ramsey Road, Shirley, NY 11967, USA

Stability	Stable for at least 1 year from receipt of products under proper storage and handling conditions. Avoid repeated freeze-thaw cycles.
Storage	Store at -80 centigrade after receiving vials.
Storage Buffer	50mM Tris, pH8.0, 8M Urea.
Concentration	>0.05 µg/µL as determined by microplate BCA method
Shipping	Dry Ice

GENE INFORMATION

Gene Name	MLH1 mutL homolog 1, colon cancer, nonpolyposis type 2 (E. coli) [Homo sapiens (human)]
Official Symbol	MLH1
Synonyms	MLH1; mutL homolog 1, colon cancer, nonpolyposis type 2 (E. coli); COCA2, mutL (E. coli) homolog 1 (colon cancer, nonpolyposis type 2); DNA mismatch repair protein Mlh1; FCC2; HNPCC; HNPCC2; COCA2; hMLH1; MGC5172
Gene ID	4292
mRNA Refseq	NM_000249
Protein Refseq	NP_000240
MIM	120436
UniProt ID	P40692

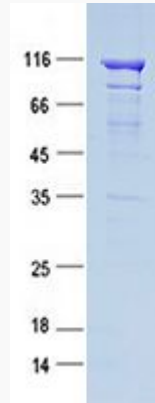
 Tel: 1-631-559-9269 1-516-512-3133

 Email: info@creative-biomart.com  Fax: 1-631-938-8127

 45-1 Ramsey Road, Shirley, NY 11967, USA



SDS-PAGE



Tel: 1-631-559-9269 1-516-512-3133

Email: info@creative-biomart.com Fax: 1-631-938-8127

45-1 Ramsey Road, Shirley, NY 11967, USA