

## Recombinant Human MLH1 Protein, His tagged

Cat. No. MLH1-13H Lot. No. (See product label)

### SPECIFICATION

<b>Product Overview</b>	Purified recombinant protein of Human mutL homolog 1, colon cancer, nonpolyposis type 2 (E. coli) (MLH1), transcript variant 1, Ser339-Glu558, with N-terminal His tag, expressed in E.coli.
<b>Species</b>	Human
<b>Source</b>	E. coli
<b>ProteinLength</b>	339-558 aa
<b>Description</b>	The protein encoded by this gene can heterodimerize with mismatch repair endonuclease PMS2 to form MutL alpha, part of the DNA mismatch repair system. When MutL alpha is bound by MutS beta and some accessory proteins, the PMS2 subunit of MutL alpha introduces a single-strand break near DNA mismatches, providing an entry point for exonuclease degradation. The encoded protein is also involved in DNA damage signaling and can heterodimerize with DNA mismatch repair protein MLH3 to form MutL gamma, which is involved in meiosis. This gene was identified as a locus frequently mutated in hereditary nonpolyposis colon cancer (HNPCC).
<b>Molecular Mass</b>	24.5 kDa
<b>Purity</b>	> 80% as determined by SDS-PAGE and Coomassie blue staining
<b>Note</b>	For testing in cell culture applications, please filter before use. Note that you may

 Tel: 1-631-559-9269 1-516-512-3133

 Email: [info@creative-biomart.com](mailto:info@creative-biomart.com)  Fax: 1-631-938-8127

 45-1 Ramsey Road, Shirley, NY 11967, USA

experience some loss of protein during the filtration process.

**Stability**

Stable for 12 months from the date of receipt of the product under proper storage and handling conditions. Avoid repeated freeze-thaw cycles.

**Storage**

Store at -80 centigrade after receiving vials.

**Storage Buffer**

25 mM Tris-HCl, pH 8.0, 150 mM NaCl, 10% glycerol

**Concentration**

>0.05 µg/µL as determined by microplate BCA method

**Shipping**

Dry Ice

## GENE INFORMATION

**Gene Name**

MLH1 mutL homolog 1, colon cancer, nonpolyposis type 2 (E. coli) [ Homo sapiens (human) ]

**Official Symbol**

MLH1

**Synonyms**

MLH1; mutL homolog 1, colon cancer, nonpolyposis type 2 (E. coli); COCA2, mutL (E. coli) homolog 1 (colon cancer, nonpolyposis type 2); DNA mismatch repair protein Mlh1; FCC2; HNPCC; HNPCC2; COCA2; hMLH1; MGC5172

**Gene ID**

4292

**mRNA Refseq**

NM\_000249

**Protein Refseq**

NP\_000240

**MIM**

120436

 Tel: 1-631-559-9269 1-516-512-3133

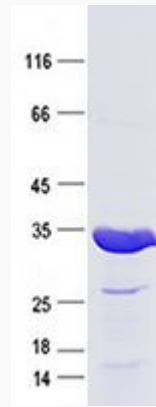
 Email: [info@creative-biomart.com](mailto:info@creative-biomart.com)  Fax: 1-631-938-8127

 45-1 Ramsey Road, Shirley, NY 11967, USA

UniProt ID

P40692

SDS-PAGE



 Tel: 1-631-559-9269 1-516-512-3133

 Email: [info@creative-biomart.com](mailto:info@creative-biomart.com)  Fax: 1-631-938-8127

 45-1 Ramsey Road, Shirley, NY 11967, USA