

Recombinant Human MLH1 Protein (Gln407-Cys756), N-His tagged

Cat. No. MLH1-4555H Lot. No. (See product label)

SPECIFICATION

Product Overview	Recombinant human MLH1 (Gln407-Cys756) fused with the N-His tag was expressed in E. coli.
Species	Human
Source	E.coli
ProteinLength	Gln407-Cys756
Form	Lyophilized powder/frozen liquid
Molecular Mass	42.19 kDa
Purity	>90% as determined by SDS-PAGE.
Notes	For research use only.
Storage	Use a manual defrost freezer and avoid repeated freeze thaw cycles. Store at 2 to 8 centigrade for one week. Store at -20 to -80 centigrade for twelve months from the date of receipt.
Storage Buffer	0.01M PBS, pH 7.4, 0.02% NLS
Reconstitution	Reconstitute in sterile water for a stock solution.

 Tel: 1-631-559-9269 1-516-512-3133

 Email: info@creative-biomart.com  Fax: 1-631-938-8127

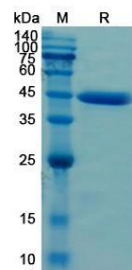
 45-1 Ramsey Road, Shirley, NY 11967, USA

Shipping

They are shipped out with dry ice/blue ice unless customers require otherwise.

GENE INFORMATION

Gene Name	MLH1 mutL homolog 1, colon cancer, nonpolyposis type 2 (E. coli) [Homo sapiens (human)]
Official Symbol	MLH1
Synonyms	MLH1; mutL homolog 1, colon cancer, nonpolyposis type 2 (E. coli); COCA2, mutL (E. coli) homolog 1 (colon cancer, nonpolyposis type 2); DNA mismatch repair protein Mlh1; FCC2; HNPCC; HNPCC2; COCA2; hMLH1; MGC5172;
Gene ID	4292
mRNA Refseq	NM_000249
Protein Refseq	NP_000240
MIM	120436
UniProt ID	P40692

SDS-PAGE


 Tel: 1-631-559-9269 1-516-512-3133

 Email: info@creative-biomart.com  Fax: 1-631-938-8127

 45-1 Ramsey Road, Shirley, NY 11967, USA