

Recombinant Human MLH1 Protein, GST-tagged

Cat. No. MLH1-5385H Lot. No. (See product label)

SPECIFICATION

Product Overview	Human MLH1 full-length ORF (AAH06850, 1 a.a. - 756 a.a.) recombinant protein with GST-tag at N-terminal.
Species	Human
Source	Wheat Germ
Description	This gene was identified as a locus frequently mutated in hereditary nonpolyposis colon cancer (HNPCC). It is a human homolog of the E. coli DNA mismatch repair gene mutL, consistent with the characteristic alterations in microsatellite sequences (RER+ phenotype) found in HNPCC. Alternatively spliced transcript variants encoding different isoforms have been described, but their full-length natures have not been determined. [provided by RefSeq]
Molecular Mass	108.9 kDa
AA Sequence	MSFVAGVIRRLDETVVNRIAAGEVIQRPANAIKEMIENCLDAKSTSIQVIVKEGGLKLIQ IQDNGTGIRKEDLDIVCERFTTSKLSQSFEDLASISTYGFRGEALASISHVAHVTTITTKTA DGKCAIRASYSDGKLGKAPPKPCAGNQGQTITVEDLFYNIATRRKALKNPSEEYGKIL EVLGRYSVHNAGISFSVKKQGETVADVRTLPNASTVDNIRSIFGNAVSRELIEIGCED KTAFKMNGYISNANYSVKKCIFLLFINHRLVESTSLRKAIVTVYAAALPKNTHPFLYLS LEISPQNVDVNVHPTKHEVHFLHEESILERVQQHIESKLLGNSSSRMYFTQTLPLGLA GPSGEMVKSTTSLTSSSTSGSSDKVYAHQMVRTDSREQKLD AFLQPLSKPLSSQPQ AIVTEDKTDISSGRARQQDEEMLELPAPAEVA AKNQSLEGDTTKGTSEMSEKRGPT

 Tel: 1-631-559-9269 1-516-512-3133

 Email: info@creative-biomart.com  Fax: 1-631-938-8127

 45-1 Ramsey Road, Shirley, NY 11967, USA

SSNPRKRHRESDVEMVEDDSRKEMTAACTPRRRIINLTSVLSLQEEINEQGHEVLR
 EMLHNHSFVGCVNPQWALAQHQTKLYLLNTTKLSEELFYQILYDFANFGVLRRLSEP
 APLFDLAMLALDSPESGWTEEDGPKKEGLAEYIVEFLKKAEMLADYFSLEIDEEGNLI
 GLPLLIDNYVPPLEGLPIFILRLATEVNWDEEKECFESLSKECAMFYSIRKQYISEESTL
 SGQQSEVPGSIPNSWKWTVEHIVYKALRSHILPPKHFTEDGNILQLANLPDLYKVFER
 C

Applications	Antibody Production Functional Study Compound Screening
Notes	Best use within three months from the date of receipt of this protein.
Storage	Store at -80 centigrade. Aliquot to avoid repeated freezing and thawing.
Storage Buffer	50 mM Tris-HCl, 10 mM reduced Glutathione, pH=8.0 in the elution buffer.

GENE INFORMATION

Gene Name	MLH1 mutL homolog 1, colon cancer, nonpolyposis type 2 (E. coli) [Homo sapiens]
Official Symbol	MLH1
Synonyms	MLH1; mutL homolog 1, colon cancer, nonpolyposis type 2 (E. coli); COCA2, mutL (E. coli) homolog 1 (colon cancer, nonpolyposis type 2); DNA mismatch repair protein Mlh1; FCC2; HNPCC; HNPCC2; COCA2; hMLH1; MGC5172;
Gene ID	4292
mRNA Refseq	NM_000249

 Tel: 1-631-559-9269 1-516-512-3133

 Email: info@creative-biomart.com  Fax: 1-631-938-8127

 45-1 Ramsey Road, Shirley, NY 11967, USA

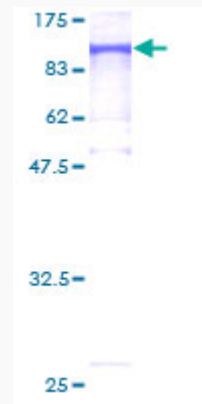
Protein Refseq NP_000240

MIM 120436

UniProt ID P40692

Quality Control

Testing:



12.5% SDS-PAGE Stained with Coomassie Blue.

 Tel: 1-631-559-9269 1-516-512-3133

 Email: info@creative-biomart.com  Fax: 1-631-938-8127

 45-1 Ramsey Road, Shirley, NY 11967, USA