

Recombinant Human MLKL Protein (1-471 aa), His-tagged

Cat. No. MLKL-1701H Lot. No. (See product label)

SPECIFICATION

Product Overview	Recombinant Human MLKL Protein (1-471 aa) is produced by Yeast expression system. This protein is fused with a 6xHis tag at the N-terminal. Research Area: Signal Transduction. Protein Description: Full Length.
Species	Human
Source	Yeast
ProteinLength	1-471 aa
Description	Pseudokinase that plays a key role in TNF-induced necroptosis, a programmed cell death process. Activated following phosphorylation by RIPK3, leading to homotrimerization, localization to the plasma mbrane and execution of programmed necrosis characterized by calcium influx and plasma mbrane damage. Does not have protein kinase activity.
Form	Tris-based buffer,50% glycerol
Molecular Mass	56.5 kDa
AA Sequence	MENLKHIIITLGQVIHKRCEEMKYCKKQCRRLGHRVGLIKPLEMLQDQGKRSVPSEK LTTAMNRFKAAL EEANGEIEKFSNRSNICRFLTASQDKILFKD VNRKLSDVWKEL SLL LQVEQRMPVSPISQGASWAQEDQQDADED RRAFQMLRRDNEKIEASLRRL E INMK EIKETLRQYLPPKCMQEIPQEIQIKEIKKEQLSGSPWILLRENEVSTLYKGEYHRAPVAI KVFKKLQAGSIAIVRQTFNKEIKTMKKFESP NILRIFGICIDETVTPPQFSIVMEYCELG

 Tel: 1-631-559-9269 1-516-512-3133

 Email: info@creative-biomart.com  Fax: 1-631-938-8127

 45-1 Ramsey Road, Shirley, NY 11967, USA

TLRELLDREKDLTLGKRMVLVLGAARGLYRLHHSEAPELHGKIRSSNFLVTQGYQVK
LAGFELRKTQTSMGLGTTREKTDREVKSTAYLSPQELEDFVYQYDVKSEIYSFGIVLW
EIATGDIPFQGCNSEKIRKLVAVKRQQEPLGEDCPSELREIIDECRAHDPSVRPSVDE
ILKKLSTFSK

Purity > 90% as determined by SDS-PAGE.

Notes Repeated freezing and thawing is not recommended. Store working aliquots at 4 centigrade for up to one week.

Storage The shelf life is related to many factors, storage state, buffer ingredients, storage temperature and the stability of the protein itself. Generally, the shelf life of liquid form is 6 months at -20 centigrade/-80 centigrade. The shelf life of lyophilized form is 12 months at -20 centigrade/-80 centigrade.

Concentration A hardcopy of COA with reconstitution instruction is sent along with the products.

GENE INFORMATION

Gene Name [MLKL mixed lineage kinase domain-like \[Homo sapiens \]](#)

Official Symbol [MLKL](#)

Synonyms MLKL; mixed lineage kinase domain-like; FLJ34389;

Gene ID [197259](#)

mRNA Refseq [NM_001142497](#)

Protein Refseq [NP_001135969](#)

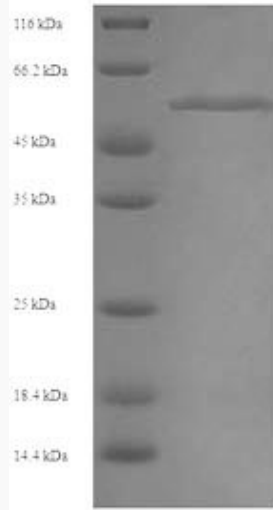
 Tel: 1-631-559-9269 1-516-512-3133

 Email: info@creative-biomart.com  Fax: 1-631-938-8127

 45-1 Ramsey Road, Shirley, NY 11967, USA

UniProt ID

Q8NB16



(Tris-Glycine gel) Discontinuous SDS-PAGE (reduced) with 5% enrichment gel and 15% separation gel.

 Tel: 1-631-559-9269 1-516-512-3133

 Email: info@creative-biomart.com  Fax: 1-631-938-8127

 45-1 Ramsey Road, Shirley, NY 11967, USA